
User Manual

myForex Dealer ver. 2.0

Contents

Contents	2
Introduction	4
Overview	4
Main Screen	4
PC Requirements.....	5
Platform Installation	5
Log In/Log Off	5
myForexDesktop Windows	7
Main window	7
File	7
Market.....	8
Tools	9
Change Rollover	9
Window	17
Charts	18
Help	22
Market Maker Tool	22
Dealing Rates window	30
Undocked Instrument window:	31
One Click Trading:.....	33
Changing Colors:	34
Right-Click on Dealing Rates:.....	34
Placing Clearing Order	35
Open Positions on All accounts	35
Right-clicking on open position.....	36
Right-click on window column headers	37
Liquidating multiple positions at once.....	37
News window	38
Total Account(s) Equity window	39
Pending Orders window	41
Total Open Position by Instrument window.....	42

Executed Orders window	43
Sorting window data.....	43
Properties Dialog Box	44
Using Right-Click function.....	49
Dealing Rates window	50
Open Positions window	51
News window.....	52
Total Account(s) Equity window	53
Pending Orders window	54
Total Open Position by Instrument window	56
Executed Orders window.....	56
Toggling windows	57
Trading Operations	59
Trading on Clearing Account	59
Trading on behalf of the trader.....	60

Introduction

Overview

This manual is a guide for using of myForex Dealer interface and its features and functions through the release 2.0.X. It is best viewed with a screen resolution of 1024 x 768 or larger.

myForex Dealer interface serves two important purposes. One - gives dealer a complete control over stream of information that passes on to the trader. Another - gives dealer control over all trading activities that pass through the application. To be able to control this flow of data and trading one must know the components and tools this application is providing.

Main Screen

The screenshot displays the myForex Dealer interface with several key sections:

- Account Summary:** A table listing accounts with columns for Account, Owner, Balance, Equity, UsdMrg, UsblMrg, AS, Lots, Comm, Rrv, Gross P/L, Net P/L, Cur, and Group.
- Dealing Rates:** A table showing market data for various instruments including EURUSD, USDJPY, GBPUSD, USDCHF, EURCHF, AUDUSD, USDCAD, EURGBP, EURJPY, GBPJPY, EURCAD, EURAUD, EURAUD, GBPCHF, CHFJPY, AUDCAD, AUDJPY, NZDUSD, NZDUSD, CADJPY, DOW JONES.IND, S&P 500, NASDAQ 100, and GOLD.
- Open Positions:** A table showing open positions for all accounts, including columns for Account, Ticket, Instrument, Lots, Amount, B/S, and Open.
- Market Maker Tool:** A window titled "Market Maker Tool: EUR/USD" showing a grid of dealing rates and bid/ask prices for various instruments.
- Customer Dealing Rates:** A window showing a detailed view of dealing rates for EUR/USD, including bid, ask, spread, and source information.
- External Feed Rates:** A window showing external feed rates for various instruments.
- Total Open Position:** A summary table for all accounts, showing instrument, lots, B/S, and AvOpen.

The main client screen includes an array of windows customizable to suit the particular needs of the user. Windows may be arranged in tile or mosaic form, or even undocked from main application window what allows to spread all windows among multiple computer displays. In its Default setting, the main platform window consists of several windows within:

Charts

Dealing Rates

Open Positions on all accounts

News

Total Account Equity

Pending Orders on all accounts

Total Open Positions by Instrument and

Executed Orders on all accounts

PC Requirements

For myForex platform to function properly the following PC guidelines should be met:

System Requirements:

- Pentium 4 processor (or AMD) similar or higher
- 2GB of RAM Memory
- Broadband Internet connection

Platform Installation

Installation Instructions:

Use the URL provided by your dealing firm to download and install the application:

Note: After the platform has been installed it is automatically checked for updates each time myForex platform is launched.

P.S. If for any reason you want or need to install JAVA manually, please follow this link:

<http://www.java.com/en/download/manual.jsp>

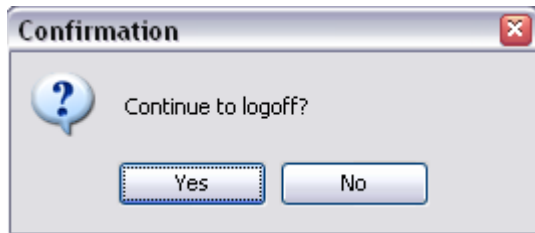
Log In/Log Off

To open the program, double-click on the shortcut on your Desktop. The Login box will open:



Enter your login name, password. The application will start.

To log off: Click on File menu and select Logoff. A popup window will open confirming the log off:



Select Yes.

myForex Dealer Windows

Main window

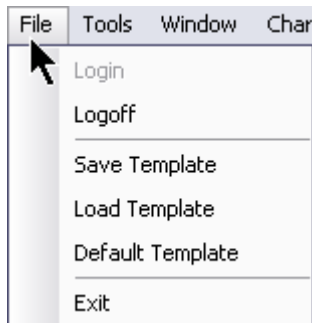
Main window holds all other MyForex windows as well as main Menu items.

The following Menu items are available:



File

File Menu makes possible saving and loading application templates.



Login: Lets log in using trader's username and password.

Logoff: Logs current user off. (Note: you can't log in back unless you completely exit the application.)

Save Template: Saves customized templates.

Load Template: Offers to load any of the saved templates.

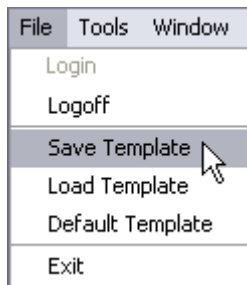
Default Template: Loads standard (default) window setup.

Exit: Logs off and exits the application.

Saving a Template

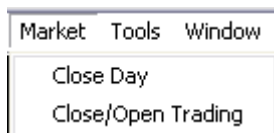
To save your own customized Trader Desk setup, go to File - Save Template.

Choose the name for your template and click button Save.



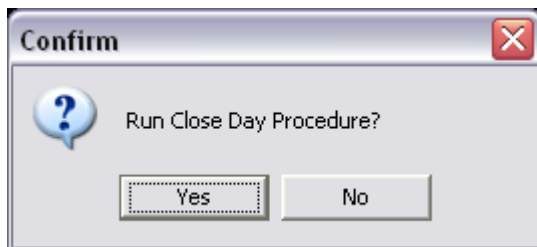
To open your customized template, go to File - Load Template and select the appropriate file name. Click button Open.

Market



Close Day

This operation adds or subtracts interest (SWAP). Typically used for manual closing if a company wants to close market in unusual time and/or non scheduled holidays. Otherwise the procedure does not require dealer's intervention and happens automatically. If done manually, a confirmation dialog box pops up:



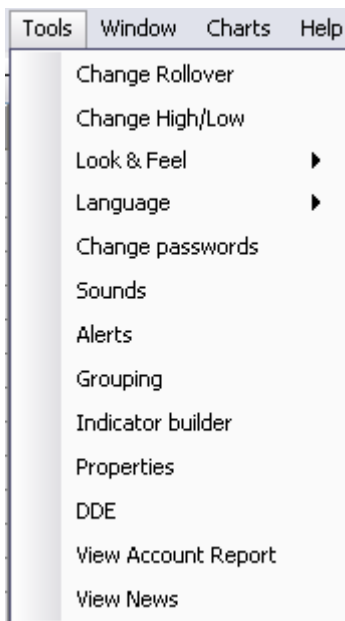
Close/Open Trading

Closes trading, prevents traders from trading. Normally happens automatically but allows closing trading manually. If done manually, a confirmation dialog box pops up:



Note: Remove any orders placed after market is closed before manually closing the platform.

Tools



Change Rollover

Instrument: shows all available instruments.

Sell: rollover charge for short positions.

Buy: rollover charge for long positions.



Change High/Low

Allows adjusting High and Low price values.

Look & Feel

Allows previewing and selecting various skins for the application. (Needs application restart to take effect)

Language

Allows selecting one of the six currently available languages: English, Spanish, Japanese, Polish, Russian and Chinese. (Needs application restart to take effect.)

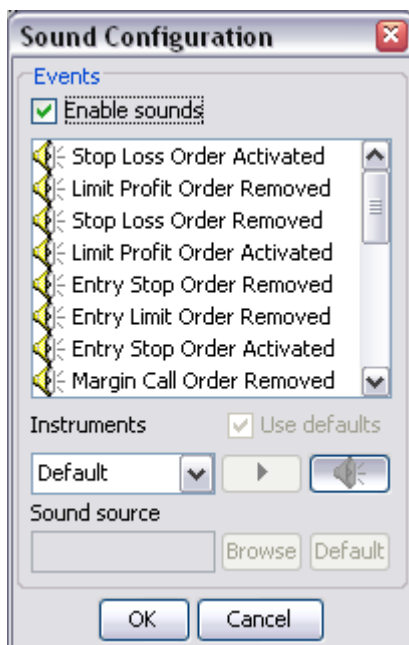
Change Passwords

Brings this window up making password change very quick and easy.



Sounds

Sound Configuration window will let you customize application's announcements of events the way you like it. You can also add your own customized sounds or disable all sounds.



Sound indication for all types of orders and currencies is enabled by default. Use 'Play' button to hear the sound indication for each selected action. Use 'Browse' button to find and assign new sounds.

To completely disable sound indication, uncheck 'Enable sounds' checkbox.

If sounds indication needs to be turned off for some types of orders:

Select type of order and press remove sound button.

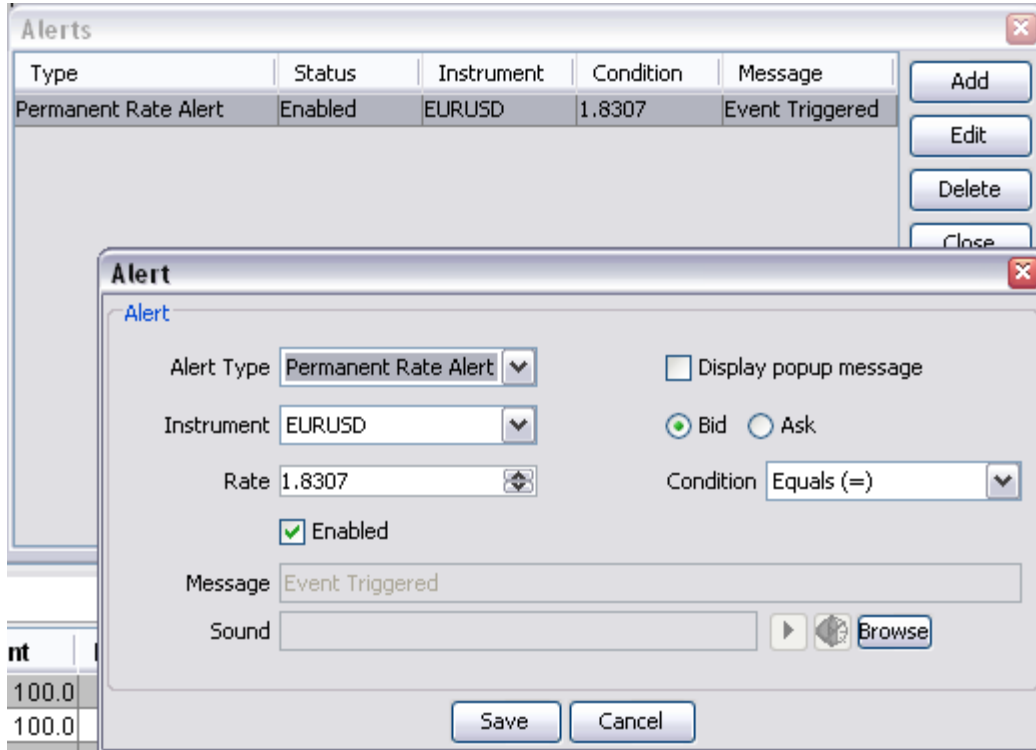
To assign custom sounds for any particular currency pair:

Select that pair from the Instruments drop-down menu, then select appropriate order type. Use 'Browse' button to find and assign custom sound.

Alerts

This feature allows you to create and edit temporary and permanent alerts triggered by wide choice of events.

An example below shows that message: 'Event Triggered' (or your custom message) and popup window will be shown to indicate that a condition (USD/JPY at 121.44 Bid) has been reached every time this condition is reached.



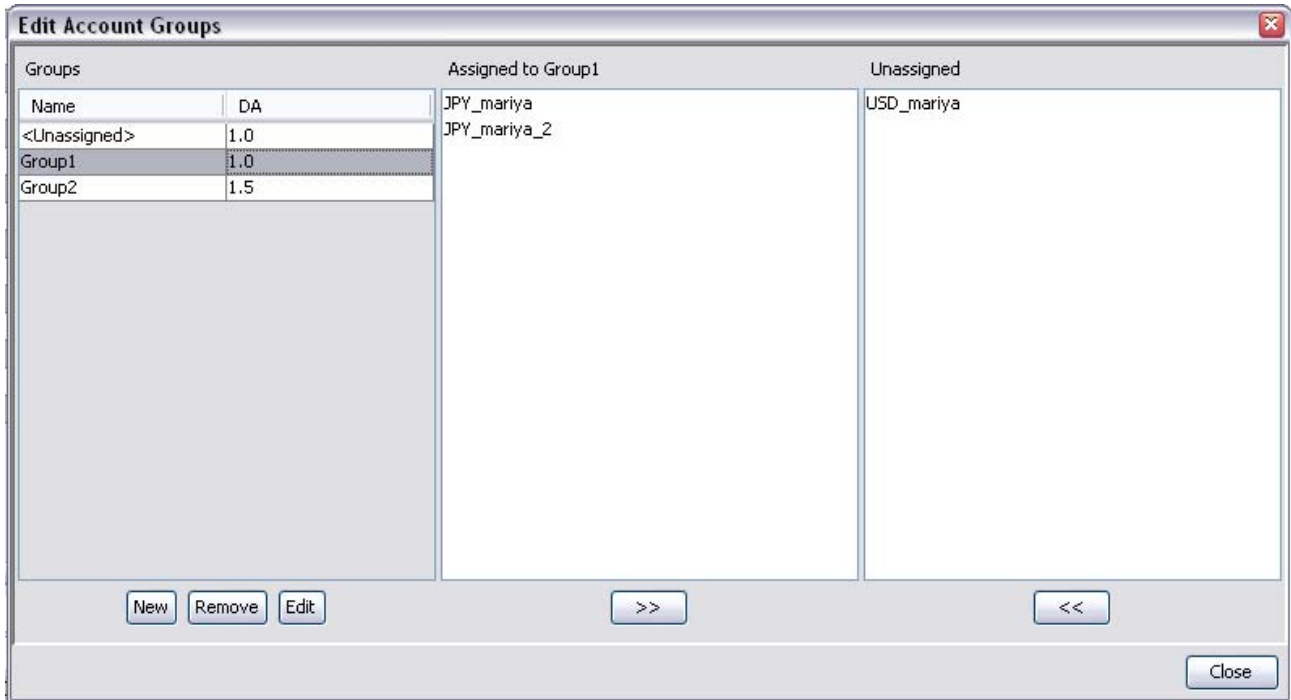
It is possible to assign custom sounds to the event in addition or instead of the message by clicking on 'Browse' button and selecting a sound file. Uncheck 'Display popup message' to disable the message.

Permanent Rate Alert: indicates that it will be triggered every time the rate and condition are met.

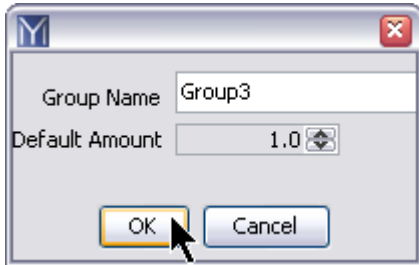
Temporary Rate Alert: will be triggered when the rate and condition are met only once.

Grouping

Grouping: makes possible to create groups of accounts distinguished from another accounts by certain criteria when handling trading on multiple accounts. This feature also makes easy placing trades on all accounts belonging to a certain group.



An example above shows one trader account with two currency accounts, USD and JPY. Groups 'Group1' and 'Group2' were created by clicking a 'New' button and assigned an appropriate default amount (number of lots traded by default) in popup window:

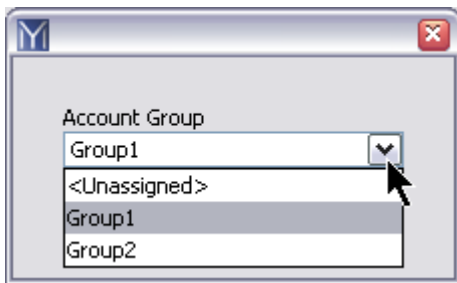


Select newly created group and an unassigned currency account and press an arrow button underneath to move it to column 'Assigned'. Repeat the same with Group2. Note: a default group '<Unassigned>' will always be there and show DA equal to 1.0.

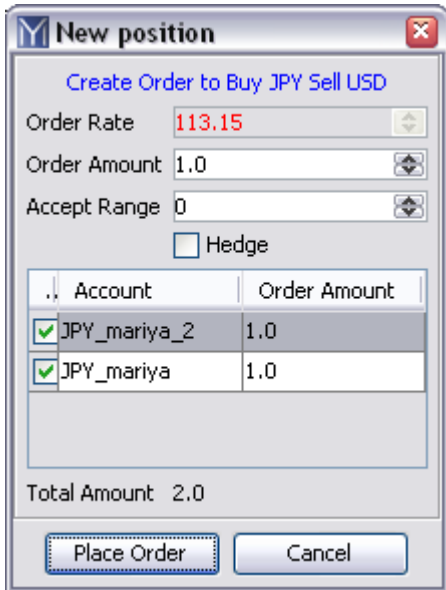
Now, when appropriate currency account or both are selected in Total Account(s) Equity window, it will show a group's name and default amount that will be used when placing trades:

Accounts				
R/v	Gross P/L	Net P/L	Cur	Group
383.72	-47,044.62	-46,662.87	USD	
44,198	-4,933,276	-4,889,078	JPY	Group1
-739	-379,618	-380,579	JPY	Group1
0.00	0.00	0.00	USD	<Unassigned>

Note: by clicking on Group1 or Group2 as pictured, a popup will appear allowing for group reassignment:

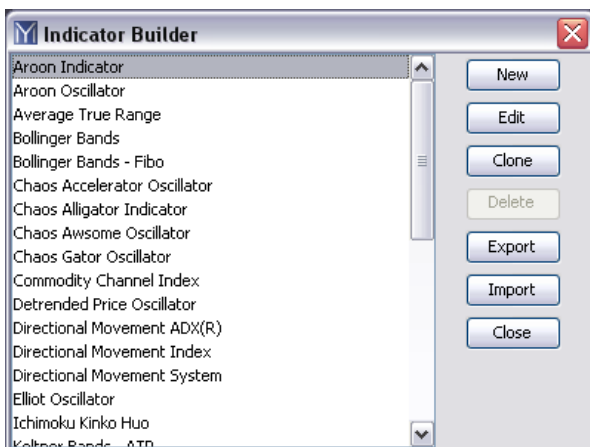


When placing a trade with both currency accounts selected, total amount of lots will be 0.5 and the window will look like this:



Indicator Builder

Indicator Builder: Allows you to apply many preset indicators as well as import and export your own customized indicators and settings. This is the way Indicator Builder looks when selected from the Tools menu:



The window compiles all available indicators in alphabetical order and is used to add new indicators, change their parameters, duplicate, delete, export and import indicators and their settings. The following buttons are used for these operations:

New: Brings up an empty Studies Editor to be filled with trader's customized settings.

Edit: Allows editing values of existing indicators from the list.

Clone: Duplicates the indicator.

Delete: Allows deleting of all non default indicators.

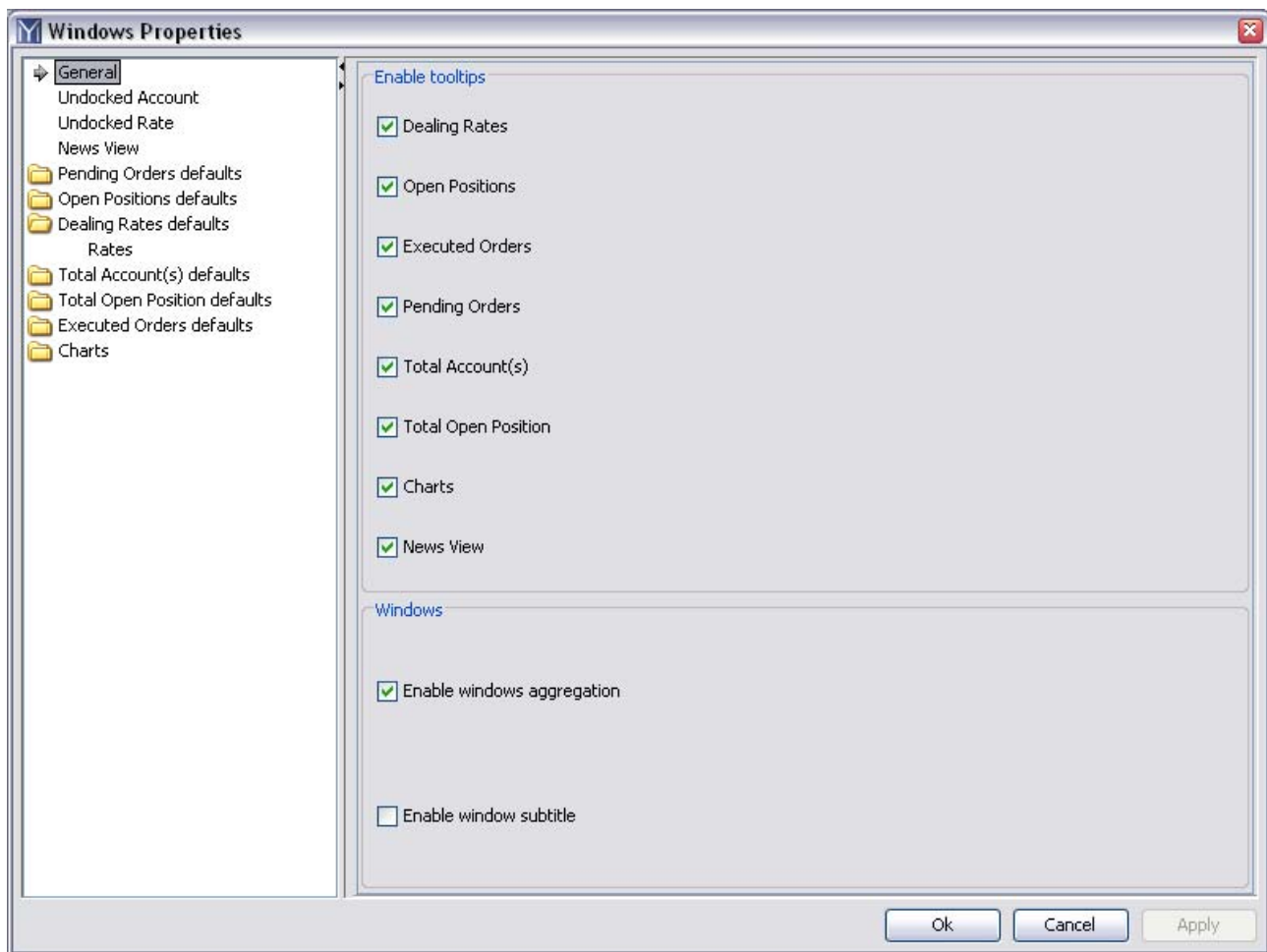
Export: Saves default and custom indicators in XML file.

Import: Allows adding custom indicators to the existing list.

Close: Closes Indicator Builder window.

Properties

Properties: Allows trader to change default backgrounds, fonts, and fonts' color as well as restore default settings in all application windows. The default view of the window is shown below:



Properties dialog box can be activated by right-clicking in any application window and selecting Properties. Right-clicking within the window will open a Properties dialog box showing window and header's current settings. The default settings can be restored by clicking Restore Default button and then Save.

In addition to customizing fonts of all application windows and windows' headers, settings for Undocked Account, Undocked Rate, News View, General and currently open Charts can be adjusted as well.

Note: for changes to take effect without closing Properties window press Apply or Restore Defaults. Alternatively, clicking Save will apply changes and exit the Properties dialog box.

DDE

DDE: Dynamic Data Exchange. With DDE menu command it is possible to send real-time currency prices from the Dealing Rates window to MS Excel, (if you have one installed on your PC), or to any other external program which supports a DDE connectivity.

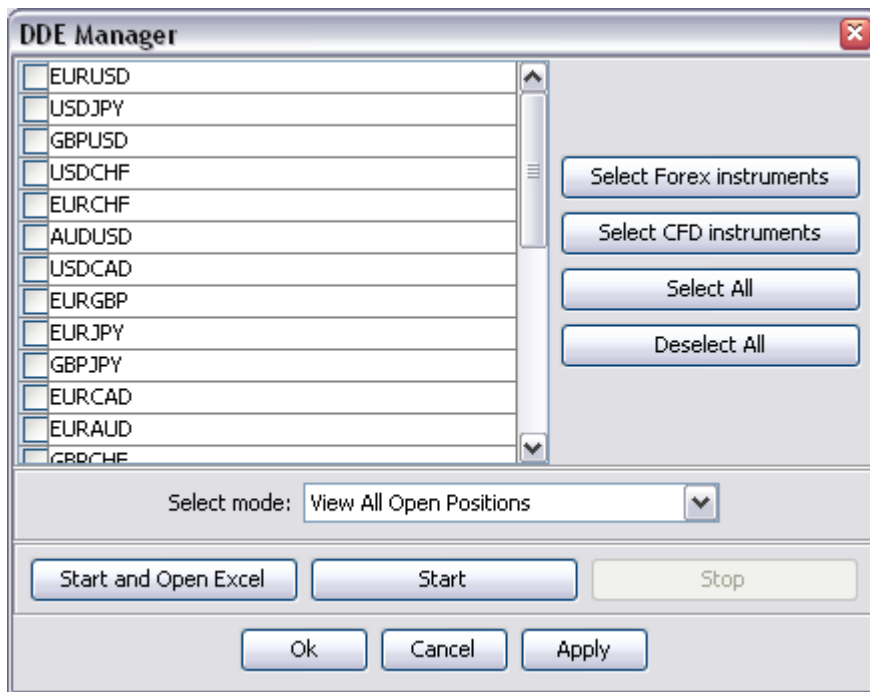
The command works in two ways:

1. Start and open Excel:

this will start MS Excel and automatically send the selected rates to it in real time.

2. Start: this will start the DDE server without opening Excel, so you will be able to open Excel (or another DDE supported program) yourself in the future, and use the connection string to populate the rates, for example:

=myFXDEV|rates!BidUSDJPY, =myFXDEV|rates!AskUSDJPY



View Account Report

View Account report: Opens up a browser window and connects to report portal letting you generate Client report by a preset or customized date, view and save it in HTML, PDF, or Excel.


CLIENT REPORT

Account


Date Presets

- Current Day
- Previous Day
- Week
- Current Month
- Previous Month
- Quarter
- Year
- Custom

Beginning Date:

 
(mm/dd/yyyy hh:mm:ss)

Ending Date:

 
(mm/dd/yyyy hh:mm:ss)

- HTML
- PDF
- Excel
- Report in One Page

Submit

Reset

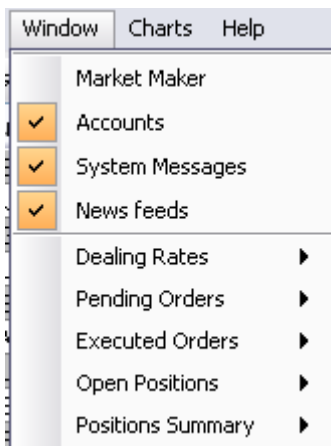
Cancel

View News

View News: Opens up a browser window with your news.

Window

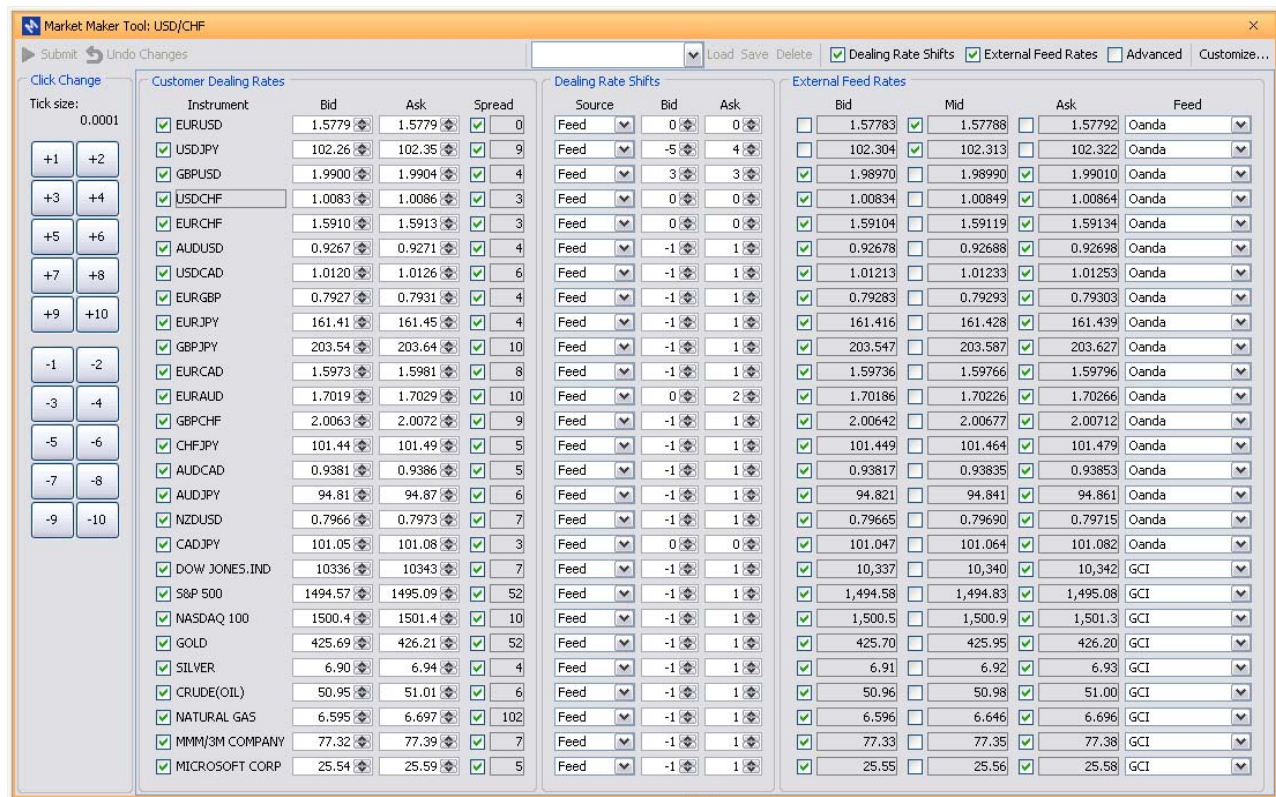
Window menu lets you choose to show/hide particular windows as well as create multiple instances of windows listed below News feeds in the image below.



- Market Maker: opens Market Maker dialog box..
- Accounts: shows/hides Total Account(s) Equity window.
- System Messages: shows/hides System Messages window.
- News Feeds: shows/hides News window.
- Dealing Rates: highlights Dealing Rates window. Creates a new window.
- Pending Orders: highlights Pending Orders window. Creates a new window.
- Executed Orders: highlights Executed Orders window. Creates a new window.
- Open Positions: highlights Open Positions window. Creates a new window.
- Positions Summary: highlights Total Open Positions by Instrument window. Creates a new window.

Market Maker

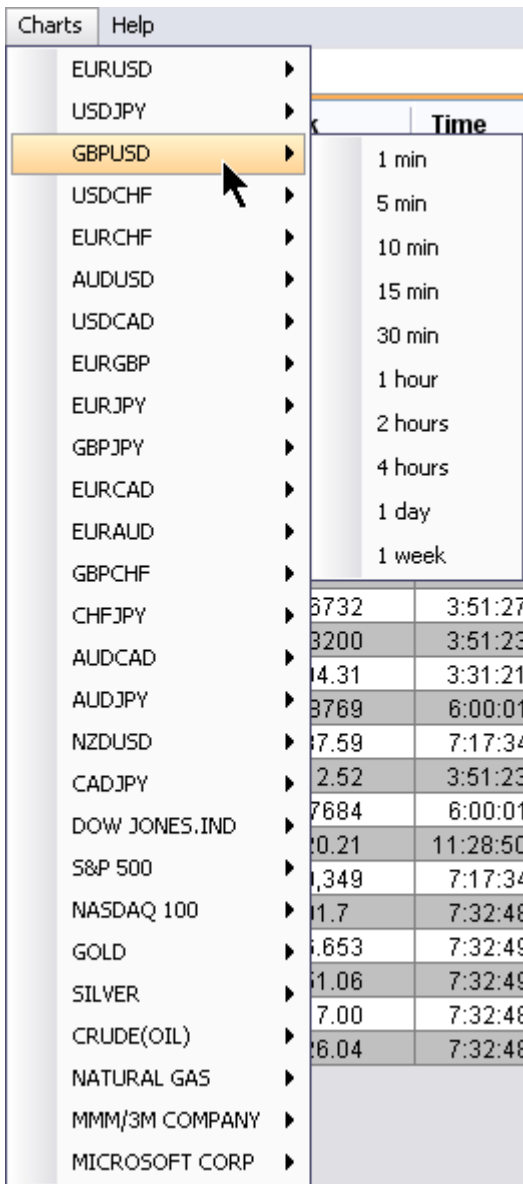
It is a special tool that controls and adjusts price feed flow coming from feed providers and results in final prices that traders see in their trading applications. Changes done in this tool require clicking Submit button on the upper left in order to become enabled. Clicking Undo Changes cancels changes that are not yet submitted. The tool consists of several panels and is discussed in detail [here](#).



Charts

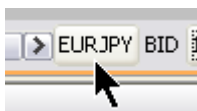
Allows opening of a new chart window by selecting corresponding currency pair and time interval. A new chart window can be opened by choosing currency pair from Charts menu, allowing you to immediately select needed time interval.

Note: There is another way to open Chart window: right-click on selected currency pair row within the Dealing Rates window, choose View Chart from pop-up menu, and select the time interval.

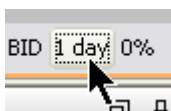


It is possible to handle many operations within Chart window. Let's review the possibilities:

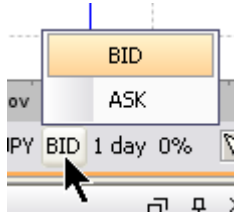
Changing instruments.



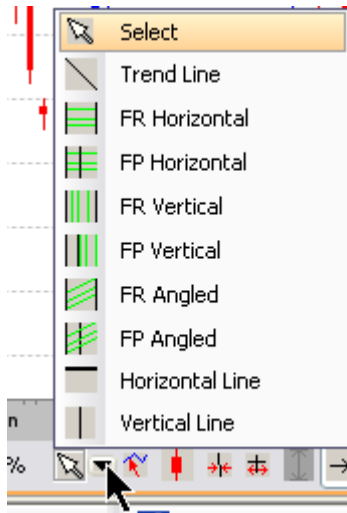
Changing time interval.



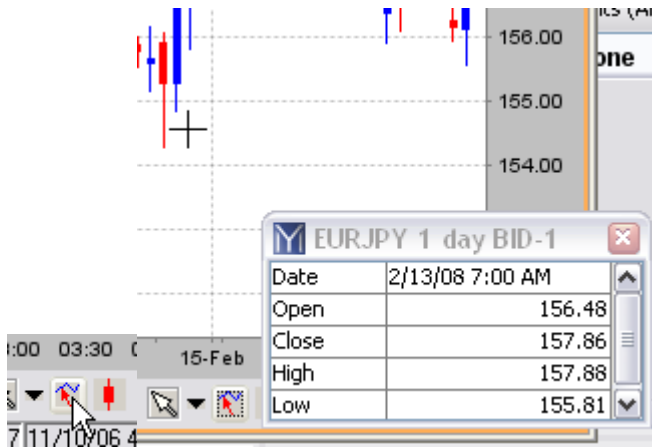
Changing Rate type.



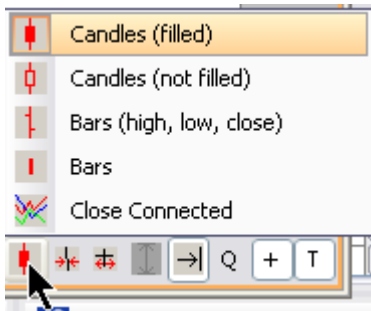
Apply charting tools.



Inspecting any particular point on the chart.



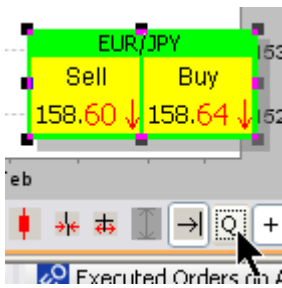
Selecting chart type.



Zooming In/Out



Showing and resizing quotes.



Showing time projections.

In order to perform technical drawings in time projection, the trader is able to extend the Chart window to the right beyond the bounds of the last candle:



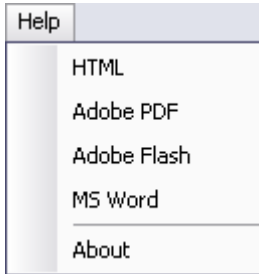
Showing Hair Cross and Mouse Info.



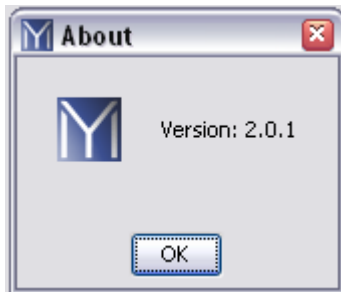


Mouse Info: shows rate and time info on chart underneath the mouse.

Help



About: Displays current application version

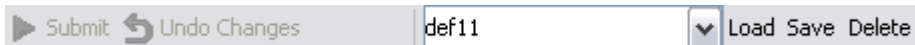


Market Maker Tool

It is a special tool that controls and adjusts price feed flow coming from feed providers and results in final prices that traders see in their trading applications. Changes done in this tool require clicking Submit button in the upper left in order to become enabled. Clicking Undo Changes cancels changes that are not yet submitted.

Saving/Loading Custom Presets.

Click on the white box and type Dafault. Click on Save to save your current settings as Default. Then create your custom settings, name them and click Save. This will save the setting but it will not yet become submitted. To submit, click Submit. To cancel not yet submitted changes, click Undo Changes. Clicking on Delete will delete saved preset shown in the while box.



The tool consists of several panels discussed in detail below.

Market Maker Tool: USD/CHF

Submit Undo Changes Load Save Delete Dealing Rate Shifts External Feed Rates Advanced Customize...

Click Change

Tick size: 0.0001

+1 +2
+3 +4
+5 +6
+7 +8
+9 +10
-1 -2
-3 -4
-5 -6
-7 -8
-9 -10

Customer Dealing Rates				Dealing Rate Shifts			External Feed Rates			
Instrument	Bid	Ask	Spread	Source	Bid	Ask	Bid	Mid	Ask	Feed
EURUSD	1.5779	1.5779	0	Feed	0	0	1.57783	1.57788	1.57792	Oanda
USDJPY	102.26	102.35	9	Feed	-5	4	102.304	102.313	102.322	Oanda
GBPUSD	1.9900	1.9904	4	Feed	3	3	1.98970	1.98990	1.99010	Oanda
USDCHF	1.0083	1.0086	3	Feed	0	0	1.00834	1.00849	1.00864	Oanda
EURCHF	1.5910	1.5913	3	Feed	0	0	1.59104	1.59119	1.59134	Oanda
AUDUSD	0.9267	0.9271	4	Feed	-1	1	0.92678	0.92688	0.92698	Oanda
USDCAD	1.0120	1.0126	6	Feed	-1	1	1.01213	1.01233	1.01253	Oanda
EURGBP	0.7927	0.7931	4	Feed	-1	1	0.79283	0.79293	0.79303	Oanda
EURJPY	161.41	161.45	4	Feed	-1	1	161.416	161.428	161.439	Oanda
GBPJPY	203.54	203.64	10	Feed	-1	1	203.547	203.587	203.627	Oanda
EURCAD	1.5973	1.5981	8	Feed	-1	1	1.59736	1.59766	1.59796	Oanda
EURAUD	1.7019	1.7029	10	Feed	0	2	1.70186	1.70226	1.70266	Oanda
GBPCHF	2.0063	2.0072	9	Feed	-1	1	2.00642	2.00677	2.00712	Oanda
CHFJPY	101.44	101.49	5	Feed	-1	1	101.449	101.464	101.479	Oanda
AUDCAD	0.9381	0.9386	5	Feed	-1	1	0.93817	0.93835	0.93853	Oanda
AUDJPY	94.81	94.87	6	Feed	-1	1	94.821	94.841	94.861	Oanda
NZDUSD	0.7966	0.7973	7	Feed	-1	1	0.79665	0.79690	0.79715	Oanda
CADJPY	101.05	101.08	3	Feed	0	0	101.047	101.064	101.082	Oanda
DOW JONES.IND	10336	10343	7	Feed	-1	1	10,337	10,340	10,342	GCI
S&P 500	1494.57	1495.09	52	Feed	-1	1	1,494.58	1,494.83	1,495.08	GCI
NASDAQ 100	1500.4	1501.4	10	Feed	-1	1	1,500.5	1,500.9	1,501.3	GCI
GOLD	425.69	426.21	52	Feed	-1	1	425.70	425.95	426.20	GCI
SILVER	6.90	6.94	4	Feed	-1	1	6.91	6.92	6.93	GCI
CRUDE(OIL)	50.95	51.01	6	Feed	-1	1	50.96	50.98	51.00	GCI
NATURAL GAS	6.595	6.697	102	Feed	-1	1	6.596	6.646	6.696	GCI
MMM/3M COMPANY	77.32	77.39	7	Feed	-1	1	77.33	77.35	77.38	GCI
MICROSOFT CORP	25.54	25.59	5	Feed	-1	1	25.55	25.56	25.58	GCI

Panel Quick Change: changes the price without confirmation. It is disabled while dealer makes manual changes in Dealing Rate Shifts or External Feed Rates panels.



Panel Customer Dealing Rates:

Shows all available instruments.

Checked box indicates the instruments that are broadcasted to the traders.

Pressed button defines the instrument for the Quick Change panel.

Bid/Ask - shows bid and ask prices.

Spread: a resulting calculated value in pips. Note: Spread can not be changed manually.

Manual Price Change

If there is a checkmark next to the spread at the left, then the spread is fixed. The Ask price will change in parallel with the manual change of a Bid price and visa-versa.

If there is no checkmark next to the spread at the left, then the spread is not fixed. The Ask will not change in parallel with the manual change of a Bid and visa-versa.

Checkmark next to the currency pair indicates that the instrument is currently being traded by the market maker, and the price is broadcasted to the traders. If there is no checkmark, then the instrument is not being currently traded.

Customer Dealing Rates				
Instrument	Bid	Ask	Spread	
<input checked="" type="checkbox"/> EURUSD	1.5775	1.5775	<input checked="" type="checkbox"/>	0
<input checked="" type="checkbox"/> USDJPY	102.28	102.37	<input checked="" type="checkbox"/>	9
<input checked="" type="checkbox"/> GBPUSD	1.9895	1.9899	<input checked="" type="checkbox"/>	4
<input checked="" type="checkbox"/> USDCHF	1.0088	1.0091	<input checked="" type="checkbox"/>	3
<input checked="" type="checkbox"/> EURCHF	1.5914	1.5917	<input checked="" type="checkbox"/>	3
<input checked="" type="checkbox"/> AUDUSD	0.9266	0.9270	<input checked="" type="checkbox"/>	4
<input checked="" type="checkbox"/> USDCAD	1.0120	1.0126	<input checked="" type="checkbox"/>	6
<input checked="" type="checkbox"/> EURGBP	0.7927	0.7931	<input checked="" type="checkbox"/>	4
<input checked="" type="checkbox"/> EURJPY	161.41	161.45	<input checked="" type="checkbox"/>	4
<input checked="" type="checkbox"/> GBPJPY	203.51	203.61	<input checked="" type="checkbox"/>	10
<input checked="" type="checkbox"/> EURCAD	1.5967	1.5975	<input checked="" type="checkbox"/>	8
<input checked="" type="checkbox"/> EURAUD	1.7016	1.7026	<input checked="" type="checkbox"/>	10
<input checked="" type="checkbox"/> GBPCHF	2.0066	2.0075	<input checked="" type="checkbox"/>	9
<input checked="" type="checkbox"/> CHFJPY	101.42	101.47	<input checked="" type="checkbox"/>	5
<input checked="" type="checkbox"/> AUDCAD	0.9380	0.9385	<input checked="" type="checkbox"/>	5
<input checked="" type="checkbox"/> AUDJPY	94.82	94.88	<input checked="" type="checkbox"/>	6
<input checked="" type="checkbox"/> NZDUSD	0.7958	0.7965	<input checked="" type="checkbox"/>	7
<input checked="" type="checkbox"/> CADJPY	101.07	101.11	<input checked="" type="checkbox"/>	4
<input checked="" type="checkbox"/> DOW JONES.IND	10336	10343	<input checked="" type="checkbox"/>	7
<input checked="" type="checkbox"/> S&P 500	1494.57	1495.09	<input checked="" type="checkbox"/>	52
<input checked="" type="checkbox"/> NASDAQ 100	1500.4	1501.4	<input checked="" type="checkbox"/>	10
<input checked="" type="checkbox"/> GOLD	425.69	426.21	<input checked="" type="checkbox"/>	52
<input checked="" type="checkbox"/> SILVER	6.90	6.94	<input checked="" type="checkbox"/>	4
<input checked="" type="checkbox"/> CRUDE(OIL)	50.95	51.01	<input checked="" type="checkbox"/>	6
<input checked="" type="checkbox"/> NATURAL GAS	6.595	6.697	<input checked="" type="checkbox"/>	102
<input checked="" type="checkbox"/> MMM/3M COMPANY	77.32	77.39	<input checked="" type="checkbox"/>	7
<input checked="" type="checkbox"/> MICROSOFT CORP	25.54	25.59	<input checked="" type="checkbox"/>	5

Panel Dealing Rate Shifts:

It allows shifting Bid and Ask rates by specified number of pips.

There are three available sources – Feed, Manual and Calc. Feed is external feed source. Manual is used for manual price change. Calculated uses other instruments to calculate the price. If chosen, a dealer has to define the base recalculation currency within External Feed Rates/Feed field.

Bid/Ask - price shifts towards external rates. These values are used to calculate DealingRates/Bid and DealingRates/Ask by the formulae given below.

Note: when this combination is chosen, then the RateEdit/Spread checkmark should get automatically off.

Feed: defines Feed source.

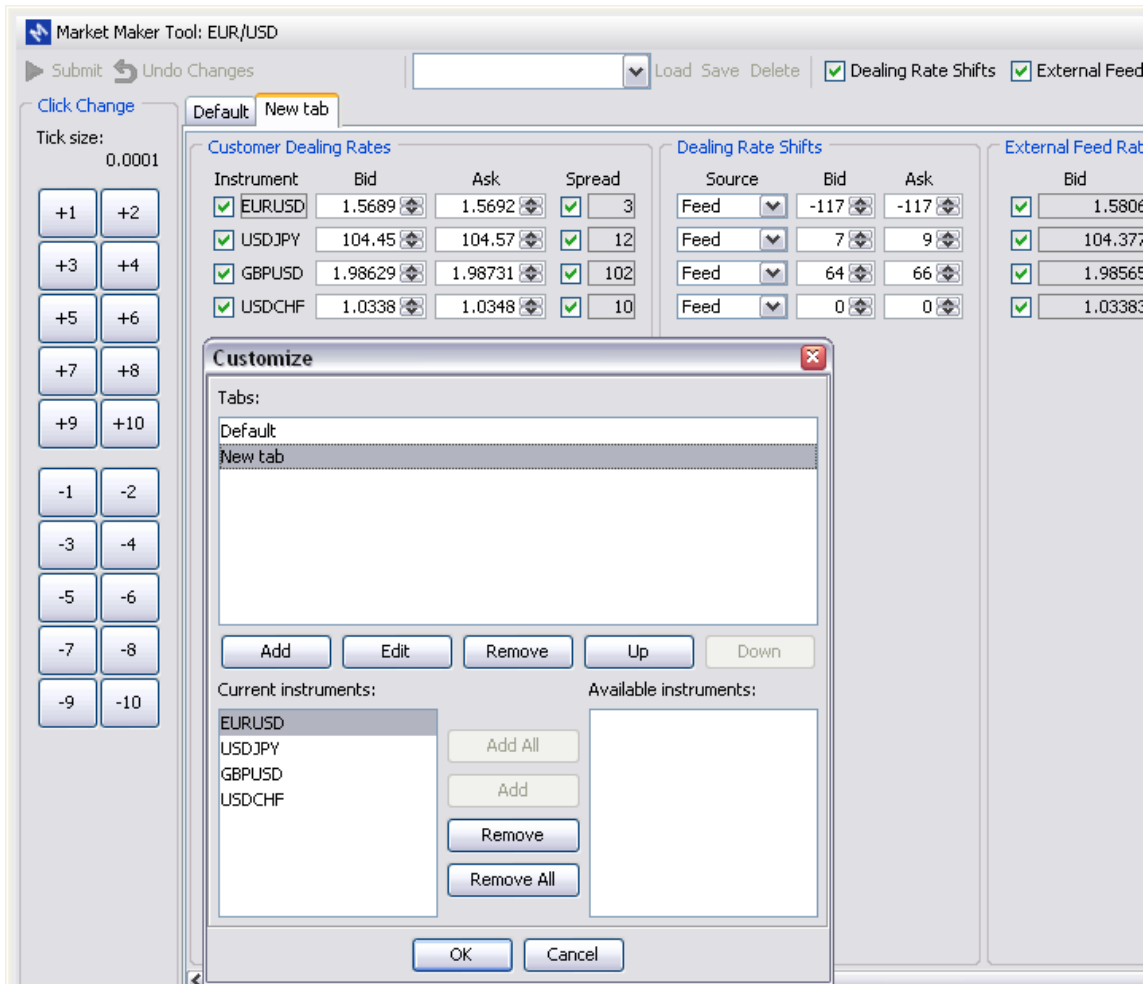
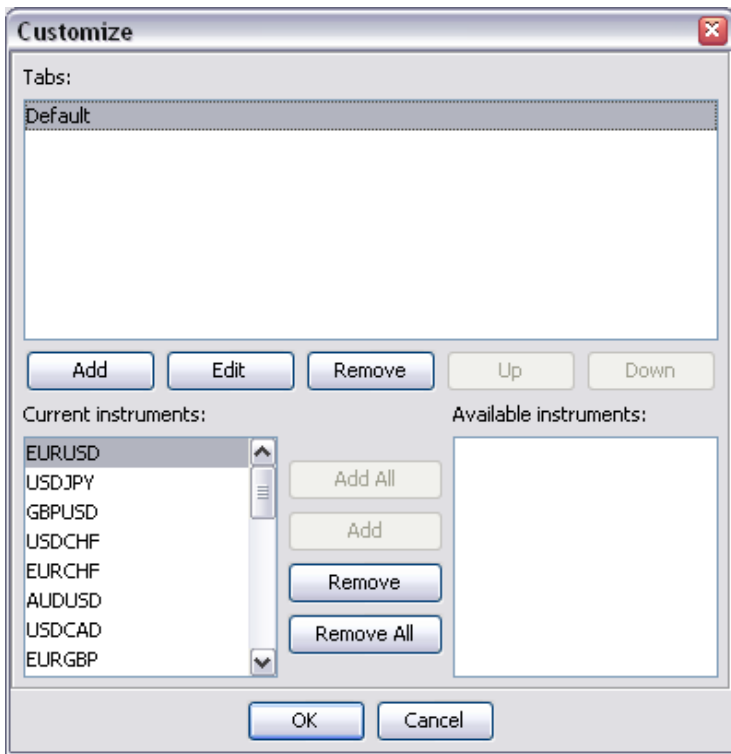
External Feed Rates							
	Bid		Mid		Ask		Feed
<input type="checkbox"/>	1.57743	<input checked="" type="checkbox"/>	1.57748	<input type="checkbox"/>	1.57752		Oanda
<input type="checkbox"/>	102.324	<input checked="" type="checkbox"/>	102.333	<input type="checkbox"/>	102.342		Oanda
<input checked="" type="checkbox"/>	1.98912	<input type="checkbox"/>	1.98932	<input checked="" type="checkbox"/>	1.98952		Oanda
<input checked="" type="checkbox"/>	1.00875	<input type="checkbox"/>	1.00890	<input checked="" type="checkbox"/>	1.00905		Oanda
<input checked="" type="checkbox"/>	1.59132	<input type="checkbox"/>	1.59147	<input checked="" type="checkbox"/>	1.59162		Oanda
<input checked="" type="checkbox"/>	0.92660	<input type="checkbox"/>	0.92670	<input checked="" type="checkbox"/>	0.92680		Oanda
<input checked="" type="checkbox"/>	1.01226	<input type="checkbox"/>	1.01246	<input checked="" type="checkbox"/>	1.01266		Oanda
<input checked="" type="checkbox"/>	0.79285	<input type="checkbox"/>	0.79295	<input checked="" type="checkbox"/>	0.79305		Oanda
<input checked="" type="checkbox"/>	161.424	<input type="checkbox"/>	161.436	<input checked="" type="checkbox"/>	161.447		Oanda
<input checked="" type="checkbox"/>	203.530	<input type="checkbox"/>	203.570	<input checked="" type="checkbox"/>	203.610		Oanda
<input checked="" type="checkbox"/>	1.59703	<input type="checkbox"/>	1.59733	<input checked="" type="checkbox"/>	1.59763		Oanda
<input checked="" type="checkbox"/>	1.70172	<input type="checkbox"/>	1.70212	<input checked="" type="checkbox"/>	1.70252		Oanda
<input checked="" type="checkbox"/>	2.00668	<input type="checkbox"/>	2.00703	<input checked="" type="checkbox"/>	2.00738		Oanda
<input checked="" type="checkbox"/>	101.427	<input type="checkbox"/>	101.442	<input checked="" type="checkbox"/>	101.457		Oanda
<input checked="" type="checkbox"/>	0.93807	<input type="checkbox"/>	0.93824	<input checked="" type="checkbox"/>	0.93842		Oanda
<input checked="" type="checkbox"/>	94.824	<input type="checkbox"/>	94.844	<input checked="" type="checkbox"/>	94.864		Oanda
<input checked="" type="checkbox"/>	0.79583	<input type="checkbox"/>	0.79608	<input checked="" type="checkbox"/>	0.79633		Oanda
<input checked="" type="checkbox"/>	101.061	<input type="checkbox"/>	101.078	<input checked="" type="checkbox"/>	101.096		Oanda
<input checked="" type="checkbox"/>	10,337	<input type="checkbox"/>	10,340	<input checked="" type="checkbox"/>	10,342		GCI
<input checked="" type="checkbox"/>	1,494.58	<input type="checkbox"/>	1,494.83	<input checked="" type="checkbox"/>	1,495.08		GCI
<input checked="" type="checkbox"/>	1,500.5	<input type="checkbox"/>	1,500.9	<input checked="" type="checkbox"/>	1,501.3		GCI
<input checked="" type="checkbox"/>	425.70	<input type="checkbox"/>	425.95	<input checked="" type="checkbox"/>	426.20		GCI
<input checked="" type="checkbox"/>	6.91	<input type="checkbox"/>	6.92	<input checked="" type="checkbox"/>	6.93		GCI
<input checked="" type="checkbox"/>	50.96	<input type="checkbox"/>	50.98	<input checked="" type="checkbox"/>	51.00		GCI
<input checked="" type="checkbox"/>	6.596	<input type="checkbox"/>	6.646	<input checked="" type="checkbox"/>	6.696		GCI
<input checked="" type="checkbox"/>	77.33	<input type="checkbox"/>	77.35	<input checked="" type="checkbox"/>	77.38		GCI
<input checked="" type="checkbox"/>	25.55	<input type="checkbox"/>	25.56	<input checked="" type="checkbox"/>	25.58		GCI

Advanced:

Shows advanced features.

Range: defines maximum number of pips a dealer can change the price at one time. It is used to avoid incidental price change by a large number of pips. Checkmark next to the currency range indicates that range protection is in use.

Interval: defines feed delay in milliseconds.



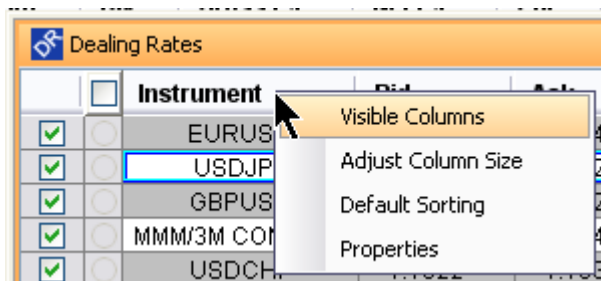
Dealing Rates window

Dealing rates window provides rate and currency information in real time as well as single click trading.

<input type="checkbox"/>	<input type="checkbox"/>	Instrument	Bid	Ask	Time	High	Low	Pip	RWS	RMB
<input checked="" type="checkbox"/>	<input type="checkbox"/>	EURUSD	1.8307	1.8044	11:57:00 PM	1.8044	1.8307	10.00	-3.86	0.47
<input checked="" type="checkbox"/>	<input type="checkbox"/>	USDJPY	113.15	113.26	3:51:27 PM	113.26	113.15	8.83	-34.00	-23.00
<input checked="" type="checkbox"/>	<input type="checkbox"/>	GBPUSD	2.0117	2.0129	3:51:27 PM	2.0129	2.0117	10.00	-6.98	0.39
<input checked="" type="checkbox"/>	<input type="checkbox"/>	MMM/3M COMPANY	77.27	77.45	7:17:38 AM	77.45	77.27	10.00	1.00	1.00
<input checked="" type="checkbox"/>	<input type="checkbox"/>	USDCHF	1.1522	1.1532	3:51:27 PM	1.1532	1.1522	8.67	10.69	2.00
<input checked="" type="checkbox"/>	<input type="checkbox"/>	MICROSOFT CORP	25.51	25.64	7:17:34 AM	25.64	25.51	10.00	1.00	1.00
<input checked="" type="checkbox"/>	<input type="checkbox"/>	EURCHF	1.6602	1.6613	3:51:27 PM	1.6613	1.6602	8.67	-6.00	5.00
<input checked="" type="checkbox"/>	<input type="checkbox"/>	AUDUSD	0.8609	0.8620	3:51:27 PM	0.8620	0.8609	10.00	-6.00	6.00
<input checked="" type="checkbox"/>	<input type="checkbox"/>	USDCAD	1.0060	1.0071	3:51:03 PM	1.0071	1.0060	9.93	6.90	-6.00
<input checked="" type="checkbox"/>	<input type="checkbox"/>	EURGBP	0.7154	0.7165	3:51:11 PM	0.7165	0.7154	20.12	3.03	-3.00
<input checked="" type="checkbox"/>	<input type="checkbox"/>	EURJPY	163.03	163.14	3:51:27 PM	163.14	163.03	8.83	-6.00	6.00
<input checked="" type="checkbox"/>	<input type="checkbox"/>	GBPJPY	227.72	227.83	3:51:23 PM	227.83	227.72	8.83	-17.00	16.00
<input checked="" type="checkbox"/>	<input type="checkbox"/>	EURCAD	1.4497	1.4508	3:51:27 PM	1.4508	1.4497	9.93	2.00	-3.00
<input checked="" type="checkbox"/>	<input type="checkbox"/>	EURAUD	1.6721	1.6732	3:51:27 PM	1.6732	1.6721	8.61	7.00	-8.00
<input checked="" type="checkbox"/>	<input type="checkbox"/>	GBPCHF	2.3189	2.3200	3:51:23 PM	2.3200	2.3189	8.67	-15.00	14.00
<input checked="" type="checkbox"/>	<input type="checkbox"/>	CHFJPY	94.20	94.31	3:31:21 PM	94.31	94.20	8.83	-1.00	0.00
<input checked="" type="checkbox"/>	<input type="checkbox"/>	AUDCAD	0.8758	0.8769	6:00:01 AM	0.8769	0.8758	9.93	-2.00	2.00
<input checked="" type="checkbox"/>	<input type="checkbox"/>	AUDJPY	87.48	87.59	7:17:34 AM	87.59	87.48	8.83	-8.00	8.00
<input checked="" type="checkbox"/>	<input type="checkbox"/>	CADJPY	112.41	112.52	3:51:23 PM	112.52	112.41	8.83	-6.00	5.00
<input checked="" type="checkbox"/>	<input type="checkbox"/>	NZDUSD	0.7673	0.7684	6:00:01 AM	0.7684	0.7673	10.00	-7.00	6.00

Columns:

Columns shown, their size, sorting and properties can be customized by right-clicking on the columns' headers:



Dealing Rates window contains 11 columns by default:

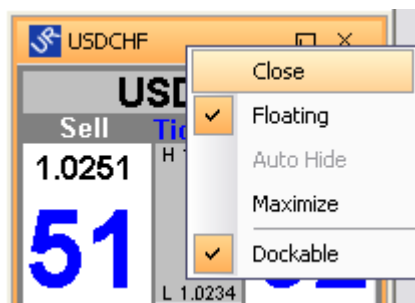
- Check mark: Activates/deactivates instruments.
- Squawk Box: Activates verbally spoken sound indication of rate change for selected currency pair.
- Instrument: Lists all available currency pairs.
- Bid: Displays current Bid rate.
- Ask: Displays current Ask rate.
- Time: Displays time of last price update.
- High: Displays highest value for the day.

- Low: Displays lowest value for the day.
- Pip: Displays cost of each pip in USD per standard lot.
- RlvS: Displays rollover Sell charges. (Measured in \$ or %)
- RlvB: Displays rollover Buy charges. (Measured in \$ or %)

Undocked Instrument window:

In order to pop up the **Undocked Instrument** window, right-click on Rate in the Dealing Rates window or within the Chart, and select the Undock Instrument submenu command. Undocked Instrument window's properties can be adjusted and customized by right-clicking on the header indicating currency pair.

Note: By default Undocked Instrument Window is Dockable.



Undocked Instrument window exhibits the following features:

Window title displays the Instrument name.

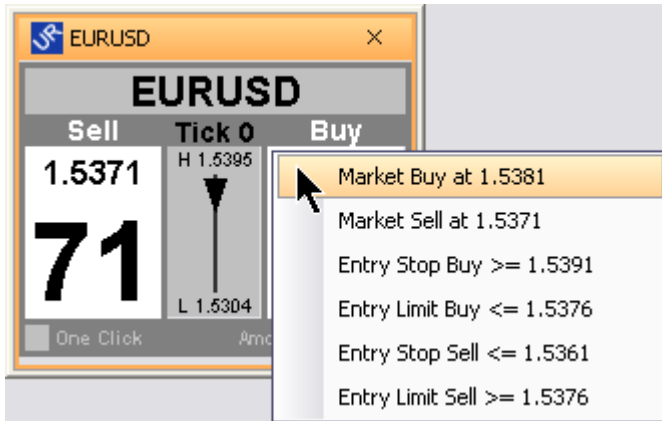
“Tick” value represents the last market move for the chosen currency pair (in pips and its direction).

The daily High and Low values are shown at the top and bottom of the middle panel.

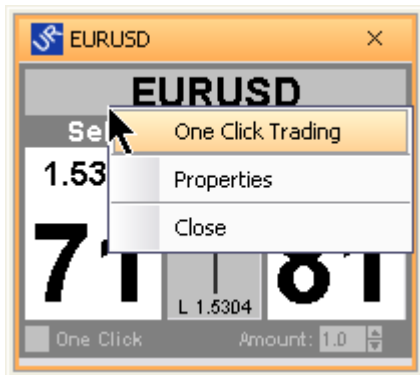
The arrow between High and Low rates indicates the current rate position against the High and Low values and the direction of the last rate change.

The bottom row displays the amount to be traded. When a single account is being traded, the can easily be increased or decreased by clicking on arrows next to the amount shown. By default the Amount value equals the DA (default amount) value(s) of the account(s) being currently selected within the Total Accounts window.

The check box on the lower left lets a trader easily activate One Click trading function.



Right-clicking on the instrument’s price field allows placing Market and Entry orders.



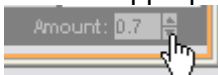
The following commands can be accessed by right-clicking on the instrument’s name:

- One-Click Trading: allows placing a trade by a single click on the rate, when One Click trading is enabled.
- Properties: opens a Properties dialog box for easy look and feel customization.
- Close: closes undocked instrument window.

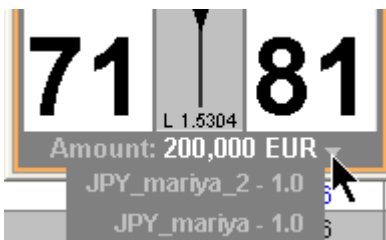
Placing Market or Entry orders in Undocked Instrument window:

Right-click on the instrument’s price field and select the type of order to be placed.

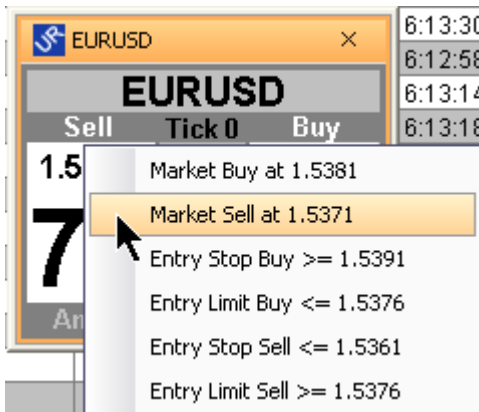
1. Select an account in the Account Information window. Hold down the Ctrl key to choose multiple accounts.
2. Choose appropriate number of lots:



Note: When multiple trading accounts are selected, the amount will equal to the DA (default amount) value of the sum of accounts selected in the Total Accounts window:

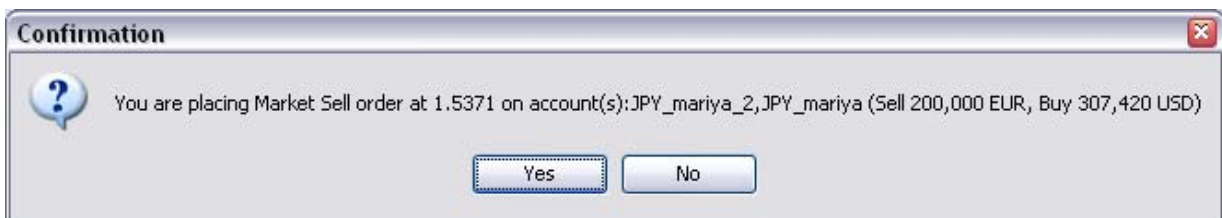


- Right-click on the instrument's price field and select the type of order to be placed:



Note: a Market order can be placed by clicking on Sell or Buy rate within the Undocked window thus omitting step 3 and going directly to Confirmation window in step 4.

- A confirmation window will open confirming order placement:



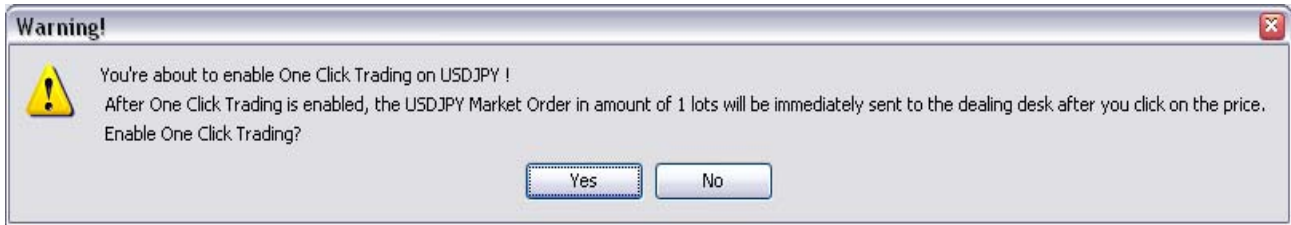
Once open, new position will be shown in the Open Positions window, and you will receive the Audio Alert “Market Order, Position Opened”. The account information will be updated. (In certain circumstances, as a result of placing an order, opposite direction position could be closed).

Note: if One Click trading is enabled, an exclamation and check marks will appear in the upper and lower left corners of Undocked window:



One Click Trading:

To enable One Click Trading please right-click on the window title and execute the One Click Trading command. Then press Yes button on the confirmation box:



The exclamation mark will appear at the top left corner of the Undocked Instrument window to indicate that One Click Trading function is enabled on this instrument.

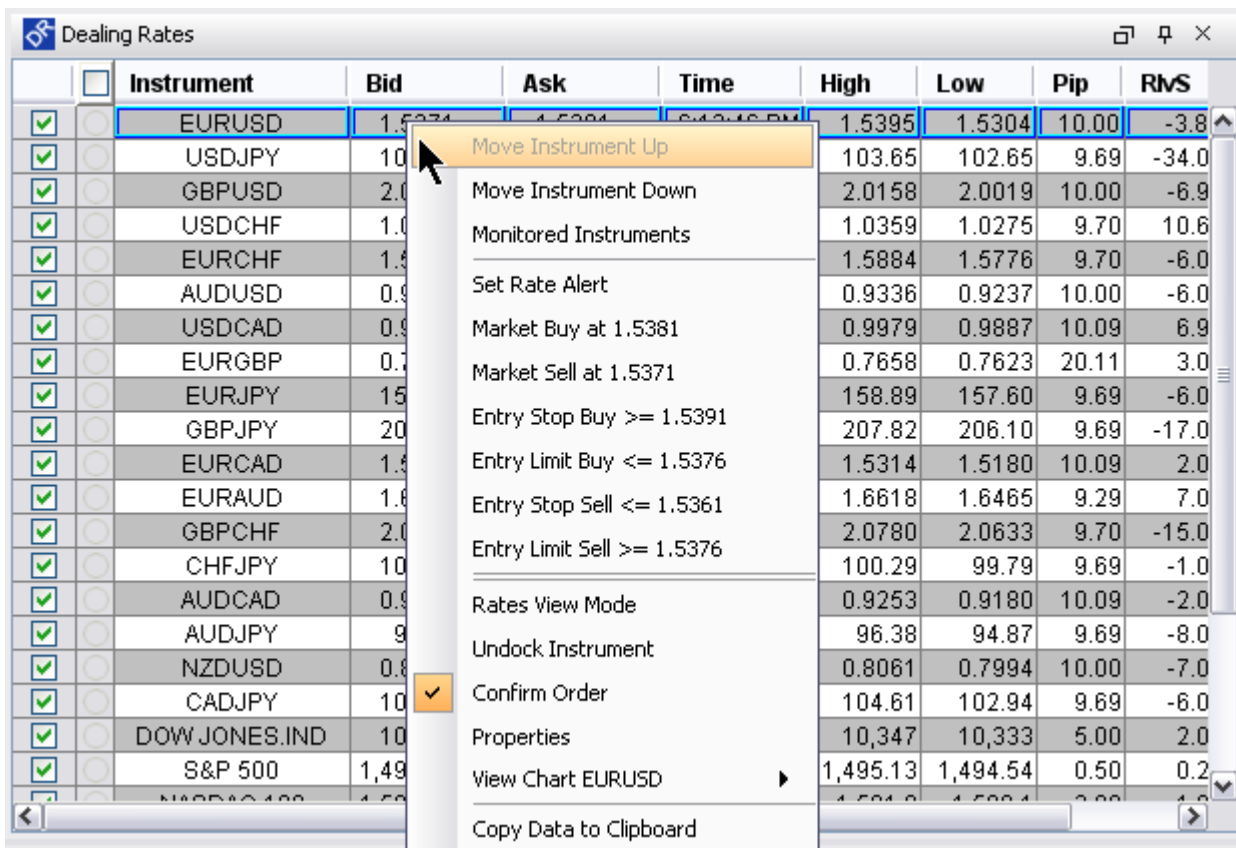
After One Click Trading is enabled, the market order will be immediately sent to the dealing desk (without a confirmation box) in the event if the rate is clicked.

Changing Colors:

To change colors, right-click on the window title and execute the Properties command. The Properties dialog will appear.

Right-Click on Dealing Rates:

Right-click on the currency row will bring up the following pop-up menu:



- Move instrument Up: moves currency pair up.
- Move instrument Down: moves currency pair down.

- **Monitored Instruments:** opens up a window that lets you select currency pairs displayed in Dealing Rates window.
- **Set Rate Alert:** allows you to create and edit temporary and permanent alerts triggered by wide choice of events.
- **Market Buy at:** allows you to place market order (buy) by opening dialog box where you can specify order amount, price and acceptable range in pips. Check Hedge if it is a hedging order.
- **Market Sell at:** allows you to place market order (sell) by opening dialog box where you can specify order amount, price and acceptable range in pips. Check Hedge if it is a hedging order.
- **Entry Stop Buy >=:** allows you to create pending order (Buy) at rate above market rate by opening dialog box where you can specify order amount, order durations, enter rate, and Hedge operation.
- **Entry Limit Buy <=:** allows you to create pending order (Buy) at rate below market rate by opening dialog box where you can specify order amount, order durations, enter rate, and Hedge operation.
- **Entry Stop Sell <=:** allows you to create pending order (Sell) at rate below market rate by opening dialog box where you can specify order amount, order durations, enter rate, and Hedge operation.
- **Entry Limit Sell >=:** allows you to create pending order (Sell) at rate above market rate by opening dialog box where you can specify order amount, order durations, enter rate, and Hedge operation.
- **Rates View Mode:** allows you to choose the view mode: compact or extended.
- **Undock Instrument:** brings up a window with selected currency pair above all other windows for easy monitoring.
- **Confirm order:** allows you to enable or disable Order Confirmation. Note: after Order Confirmation is disabled, the orders are sent to the dealing desk immediately after you press the Submit button on the Place Order dialog box without confirmation.
- **View Chart:** allows you to select and view a chart window with selected timeframe.
- **Properties:** allows you to change default backgrounds, fonts, and fonts' color as well as restore default settings in all application windows.
- **Copy Data to Clipboard:** allows you to copy Dealing Rates window data to Clipboard for further use in other programs.

Placing Clearing Order

This operation is covered in [Trading Operations](#) chapter at the end of the manual.

Open Positions on All accounts

Open Positions on All accounts displays all account(s) positions that are currently open.

Account	Ticket	Instrument	Lots	Amount	B/S	Open	Close	Stop	Limit	Pips	Gros...	Comm	Rlv	Net P/L	Date/Time
JPY_mariya_2	32934	EURUSD	2.0	200.0	B	1.5109	1.5371			524.0	540,506	0	970	541,476	2/28/08 6:08:14 PM
USD_mariya	32835	GBPUSD	1.0	100.0	B	1.9640	2.0107			467.0	4,670.00	-20.00	7.80	4,657.80	2/15/08 11:50:03 PM
USD_mariya	32760	CADJPY	0.5	50.0	S	107.48	104.26			161.0	1,559.32	-10.00	-60.00	1,489.32	2/15/08 10:47:29 PM
USD_mariya	32761	DOW JONE...	1.0	0.0050	S	10,332	10,347			-15.0	-75.00	-20.00	40.00	-55.00	2/15/08 10:47:33 PM
USD_mariya	32756	AUDUSD	1.0	100.0	S	0.9053	0.9298			-245.0	-2,450.00	-20.00	-120.00	-2,590.00	2/15/08 10:46:43 PM

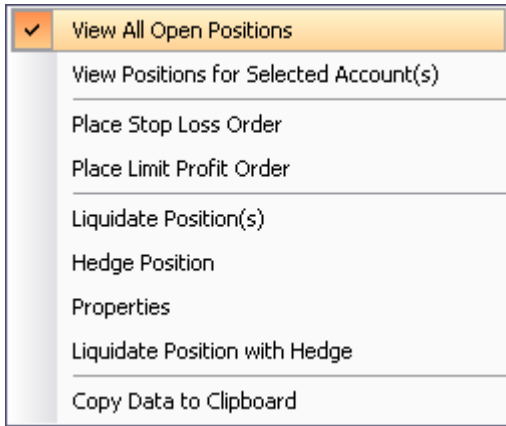
Columns:

Open Positions on All accounts window contains 18 columns by default (max 20):

- Account: shows account name.
- Ticket: displays referenced ticket number.
- Instrument: lists currency pairs of all Open orders.
- Lots: shows number of lots.
- Amount: order's amount shown in 100K lots in contract currency.
- B/S: buy or Sell position.
- Open: shows rate at which position was opened.
- Close: shows rate at which position may be closed in real time.
- Stop: shows rate (if defined) at which Stop Loss order should be executed.
- Limit: shows rate (if defined) at which Limit order should be executed.
- Pips: number pips gaining or loosing.
- Gross P/L: displays current gross gain or loss.
- Comm: displays commissions.
- Rlv: displays rollover in principal currency.
- Net P/L: displays Gross P/L less commissions.
- Date/Time: displays order opening date/time.
- Date: displays order opening date.
- Sell: displays rate on which Sell order was opened.
- Time: displays order opening time.
- Buy: displays rate on which Buy order was opened.

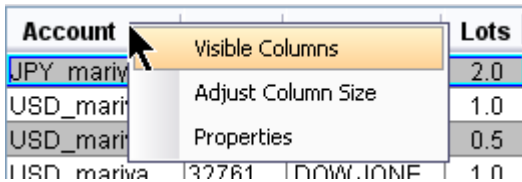
Right-clicking on open position

Right-click on any open position within this window will result in the following pop-up menu:



Right-click on window column headers

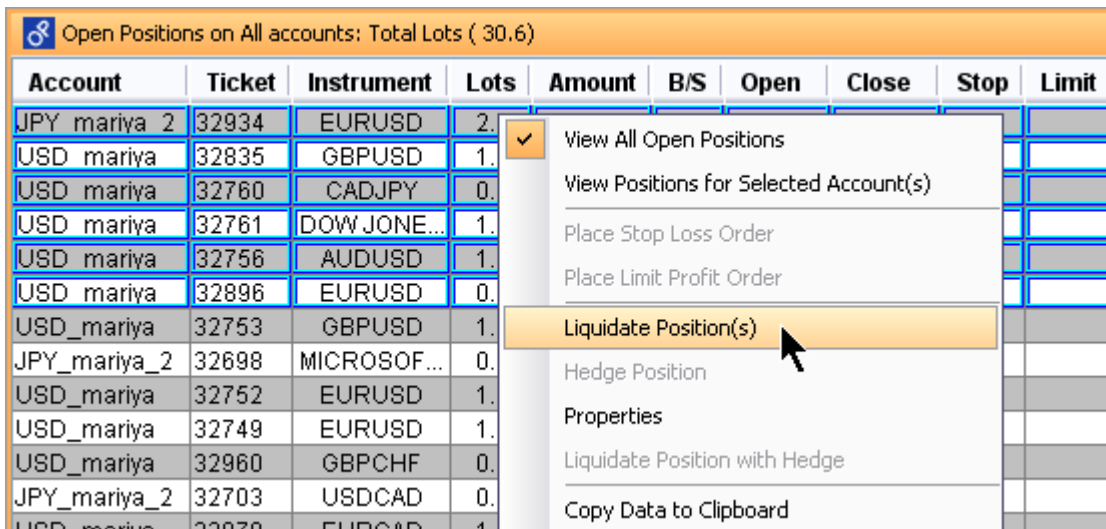
Allows you to select following menu items: Visible Columns, Adjust Column Size, and Properties.



Liquidating multiple positions at once

In the Open Positions window select multiple positions by using Shift or Ctrl keyboard keys.

Right-click on any of the selected positions and execute Liquidate Positions command from the pop-up menu. The following dialog appears:

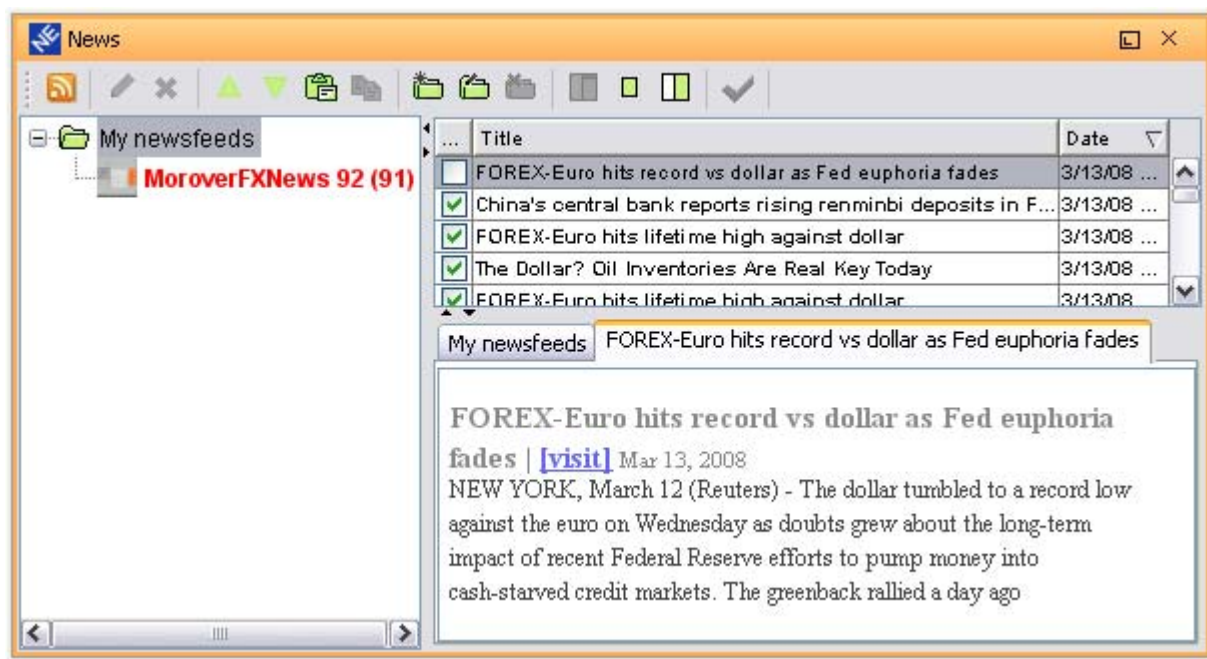


Also, you can specify Accepted Range and deselect some positions.

Press Confirm.

News window

News window provides traders with quick overview of recent news as well as the time when they were released. Each selected headline will display its content right below.



News window functionality:

Allows adding and customizing of RSS news feeds.

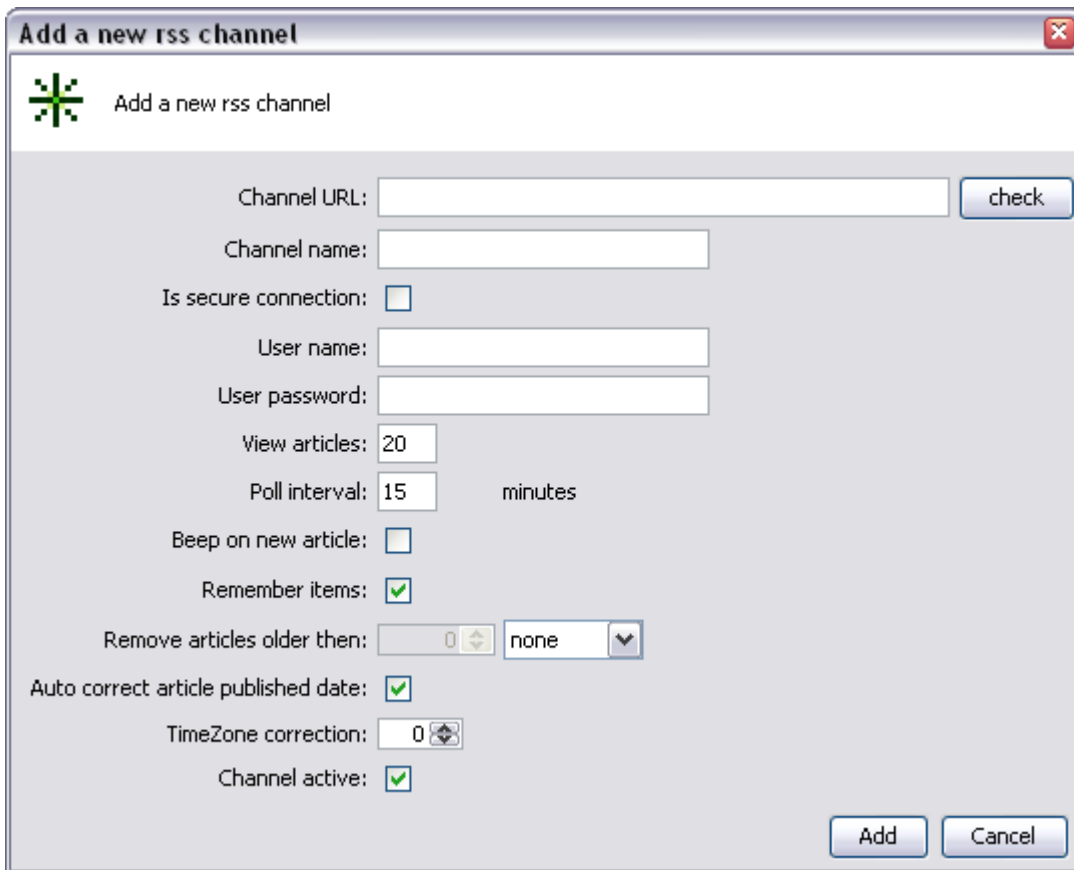
Sorting feeds by creating folders.

Setting polling intervals and number of articles displayed.

Changing the view of news from Standard to Compact and Article List view.

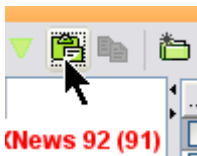
Keeping track of read articles.

To add news: click on the orange square in the upper right of New window. The following window will pop-up allowing adding and customizing your news:



Press Add button to add the channel and close the window.

Alternatively, copy your News feed URL and use Paste function to automatically open an Add a new rss channel window with URL already placed in appropriate field:



Added channels can be modified, moved or deleted by using the icons on a New window header, as well as using a right-click command and selecting appropriate action:



News window header can be detached by dragging its left side out:



Total Account(s) Equity window

Total Account(s) Equity window computes total summary of all accounts in real time.

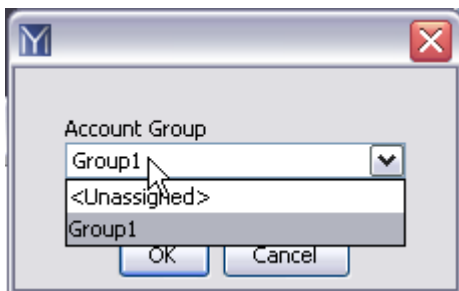
Row ALL lists financial summary for all trader's accounts including total balance, available equity, used and usable margin, total number of open lots, commission, Rollover, total gross P/L, total net P/L, the currency that is used for calculations, DA and UMR(if shown).

Account	Owner	Balance	Equity	UsdMrg	UsblMrg	AS	Lots	Comm	Rlv	Cur	Group	DA	UMR	Gr
ALL		20,843,437.78	20,240,168.65	24,894.66	20,215,273.99		21.60	-272.73	-977.13	USD		1.0	813.032541871671	
JPY_mariya...	mariya_tr	82,962,758	69,941,718	867,752	69,073,966	TR	8.00	0	-31,574	JPY	<Unassigned>	1.0	80.60106543198026	
JPY_mariya	mariya_tr	1,062,406,846	1,061,834,364	158,620	1,061,675,744	TR	1.00	-2,140	-5,230	JPY	<Unassigned>	1.0	6694.202266422897	
USD_mariya	mariya_tr	9,750,269.70	9,278,779.33	14,947.86	9,263,831.47	TR	12.60	-252.00	-620.67	USD	<Unassigned>	1.0	620.742993606623	

Columns:

Total Account(s) Equity window contains 15 columns by default (max 16):

- Account: displays account name.
- Owner: shows trader name.
- Balance: displays current total balance.
- Equity: displays current total equity.
- UsdMrg: displays amount of margin used.
- UsblMrg: displays amount of margin available.
- AS: displays account status.
- Lots: displays total number of lots.
- Comm: displays earned commission.
- Rlv: displays rollover. (Measured in \$ or % as defined in Administration module)
- Gross P/L: displays total gross profit or loss.
- Net P/L: displays total net profit or loss.
- Cur: displays currency used to calculate total account equity.
- Group: trader can assign accounts to a group name for easy sorting and tracking accounts. Clicking on account's Group row will popup the following window, allowing to add or remove an account from the group by selecting it:



- DA: displays Default Amount for a single order. Measured in standard lots. Default amount can be changed by clicking on DA row. The following window will popup allowing to change a default amount:



Uncheck Account's Default Amount checkbox to change the default amount and click Save.

- UMR (Used Margin Ratio): $UMR = \text{Equity} / \text{Used Margin}$

Pending Orders window

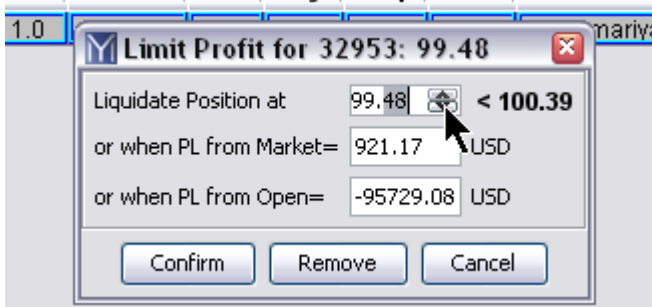
This window shows all Entry, or Stop/Limit orders to be executed when appropriate price condition is reached. The look of Pending Orders window can be chosen in its pop-up menu (Pending Orders on All accounts (All) by default).

Order	Ticket	IF Done	Hedge	Type	Instrument	Lots	Amount	Sell	Buy	Stop	Limit	Account	Duration	Date/Time	Date	Time	Market
289347	32953			L	CHFJPY	1.0	100.0		99.48			USD_mariya	GTC	3/6/08 6:30:24 PM	3/6/08	6:30:24 PM	100.

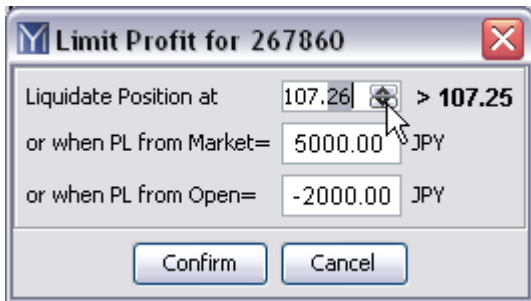
Columns

Pending Orders on All accounts window contains 16 columns by default (max 18):

- Order: Displays order number.
- Ticket: Displays referenced ticket number.
- If Done: Displays IFDone order number.
- Hedge: Shows if order is a hedge.
- Type: Shows order type.
- Instrument: Lists currency pairs of all Pending orders.
- Lots: Shows number of lots.
- Amount: Order amount shown in 100K lots in contract currency.
- Sell: Shows price on which pending order will execute (for Sell order).
- Buy: Shows price on which pending order will execute (for Buy order).
- Stop: Shows Stop price of pending order (if defined). Stop Loss can be defined by clicking on it and entering the value in the pop-up window:



- Limit: Shows Limit price of pending order (if defined). Limit can be defined by clicking on it and entering the value in the popup window or by right-clicking and selecting Change Order Rate:



- Market: Shows instrument current market price (Bid or Ask depending on order direction)
- Account: Shows account name.
- Duration: Shows time until order(s) expiration.
- Date/Time: Shows Date and Time when pending order was placed
- Date: Shows Date when pending order was placed.
- Time: Shows Time when pending order was placed.

Total Open Position by Instrument window

This window shows data for each currently open currency pair.

Instrument	Lots	B/S	AvOpen	Close	BEP	P...	GrossP/L	Total Gross P/L	Total Pips	Net P/L	NH
EURUSD	2.0	B	1.5109	1.5432	1.5109	646.0	6,460.00	-30,227.00	-3022.7	6,460.00	
GBPUSD	1.0	B	1.9640	2.0175	1.9640	535.0	5,350.00	-5,420.00	-542.0	5,350.00	
CADJPY	0.5	S	107.48	104.55	107.48	146.5	1,421.36	1,421.36	146.5	1,421.36	0.50
MICROSOFT...	0.5	S	25.51	25.63	25.51	-6.0	-60.00	-60.00	-6.0	-60.00	0.50
DOWJONE...	1.0	S	10,332	10,347	10,332	-15.0	-75.00	-75.00	-15.0	-75.00	1.00
USDCAD	0.5	B	0.9968	0.9853	0.9968	-57.5	-582.87	-582.87	-57.5	-582.87	0.50

Columns:

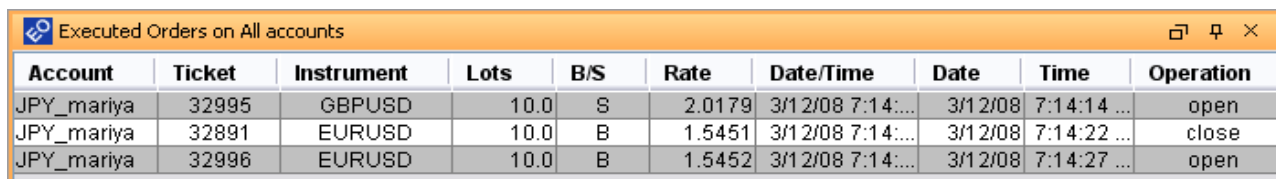
There are 12 columns by default.

- Instrument: lists currency pairs of all currently open positions.
- Lots: shows number of lots.

- B/S: shows Buy or Sell open position(s) direction.
- AvOpen: displays weighted average rate for each open instrument.
- Close: shows current market price on which positions may be closed.
- BEP: shows Break even point.
- Pips: displays number of pips gained or lost.
- Gross P/L: displays current gross gain or Loss.
- Total Gross P/L: total gross profit or loss.
- Total Pips: displays total number of pips gained or lost.
- Net P/L: total net profit or loss.
- NH: shows the number of not hedged positions (in lots).

Executed Orders window

This window shows history of executed orders for all accounts in chronological order by default. Data can be manually sorted by clicking on each column.



Account	Ticket	Instrument	Lots	B/S	Rate	Date/Time	Date	Time	Operation
JPY_mariya	32995	GBPUSD	10.0	S	2.0179	3/12/08 7:14:...	3/12/08	7:14:14 ...	open
JPY_mariya	32891	EURUSD	10.0	B	1.5451	3/12/08 7:14:...	3/12/08	7:14:22 ...	close
JPY_mariya	32996	EURUSD	10.0	B	1.5452	3/12/08 7:14:...	3/12/08	7:14:27 ...	open

Columns

Executed Orders on All accounts window contains 11 columns by default:

- Account: shows account name.
- Ticket: displays referenced ticket number.
- Instrument: lists currency pairs of all executed orders.
- Lots: shows number of lots.
- B/S: displays Buy or Sell executed order direction.
- Rate: displays Rate at which order was executed.
- Date/Time: displays date and time of execution for each executed order.
- Date: displays date of execution for each executed order.
- Time: displays time of execution for each executed order.
- Operation: shows if position was open or closed.
- Pips: displays number of pips gained or lost on each executed order.

Sorting window data

For all spreadsheet looking windows (i.e. Dealing Rates, or Open Positions window) the following techniques are used to sort the spreadsheet data:

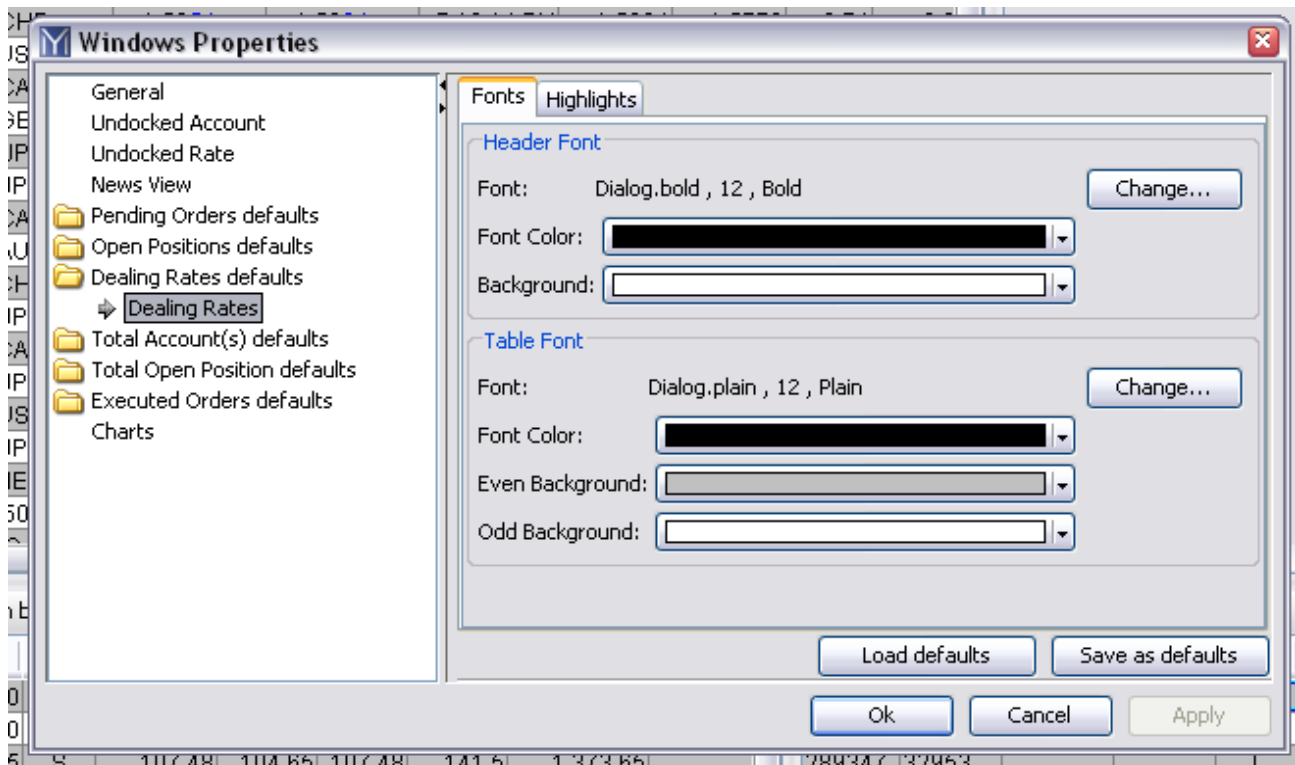
1. Each spreadsheet looking window is initially displayed in its own Default Sorting appearance.
2. For example: Open Positions window is sorted by date, Rates and Summary window are sorted by traditional rate sorting order (EURUSD, USDJPY, GPBUSD, ..., etc.).
3. User can click on any column title to sort the spreadsheet by that column in ascending order (the "down" arrow is displayed in the column title). To switch to descending order please, click one more time (the "up" arrow is displayed in the column title).
4. User can switch to the Default Sorting by:
 - 4.1. clicking once more on the column tile (no arrow is displayed in the column title).
 - 4.2. right click on the column title and execute the "Default Sorting" command from the pop-up menu
5. User can create custom sorting by right clicking on the row and executing "Move Up" or "Move Down" command from the pop-up menu. The custom sorting then can be saved in the user template by executing "File/Save Template" command from the main menu.

Properties Dialog Box

Properties dialog box can be activated by right-clicking in any application window and selecting Properties. Right-clicking within the window will open a Properties dialog box showing window and header's current settings. The default settings can be restored by clicking Restore Default button and then Save.

In addition to customizing fonts of all application windows and windows' headers, settings for Undocked Account, Undocked Rate, News View, General and currently open Charts can be adjusted as well.

Note: for changes to take effect without closing Properties dialog box click Apply or Restore Defaults. Alternatively, clicking Save will apply changes and exit the Properties dialog box.



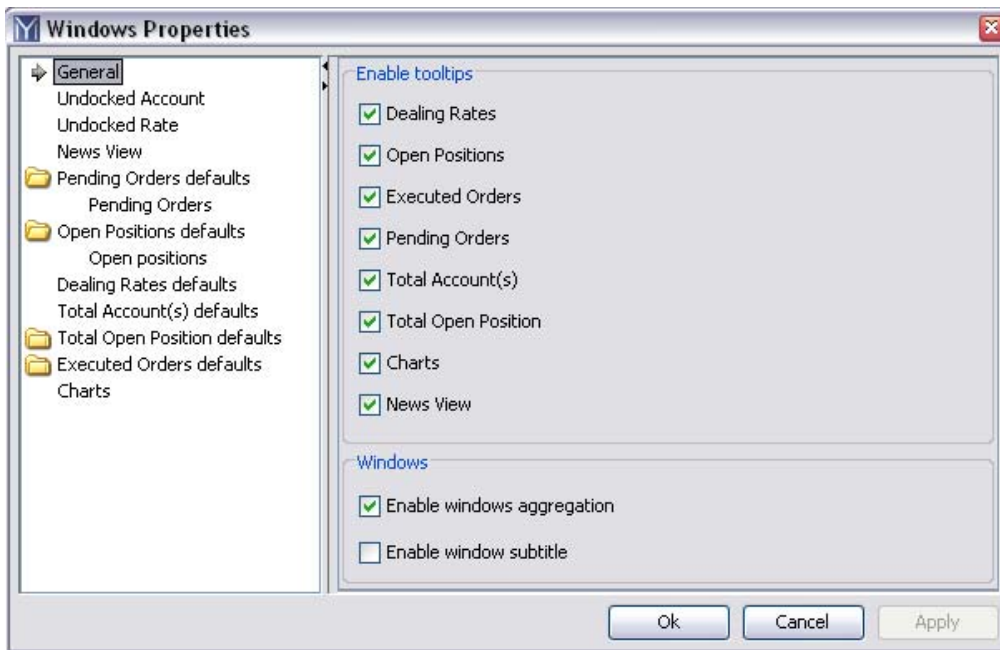
Left side of the properties dialog box lists all application's windows, including Undocked Account and Undocked Rate that can be customized and saved in application template settings.

Every application window has an option of adjusting the Header and Table Fonts, their size and background color pattern.

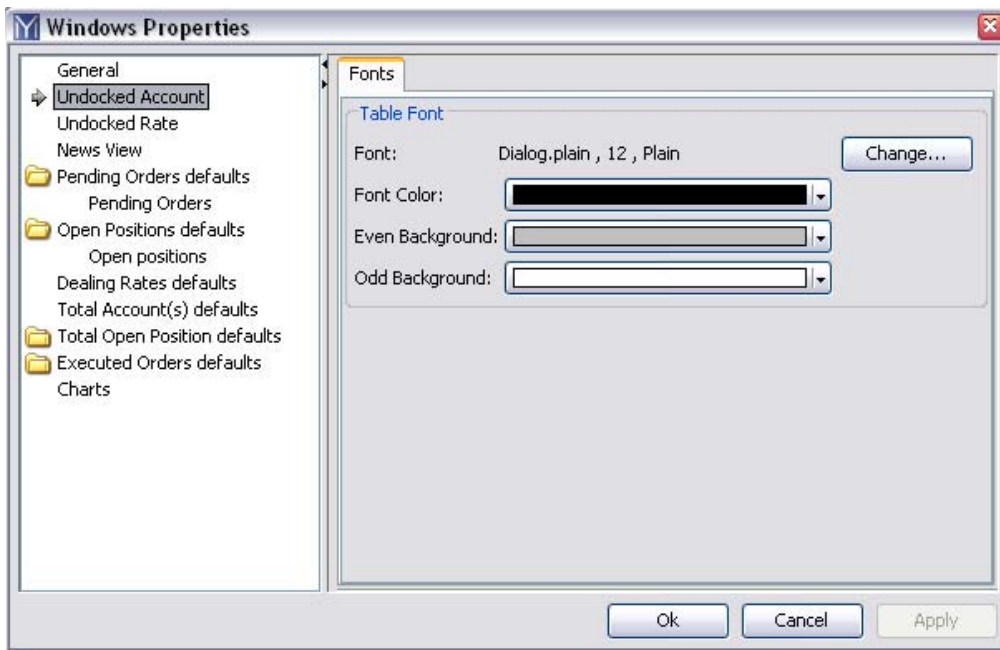
In addition, Pending Orders, Open Positions, Dealing Rates, and Total Accounts offer customization of Highlights. For example, all types of Pending Orders can be highlighted in different colors to provide a visual aid to the dealer.

Let's take a closer look what Properties dialog box has to offer.

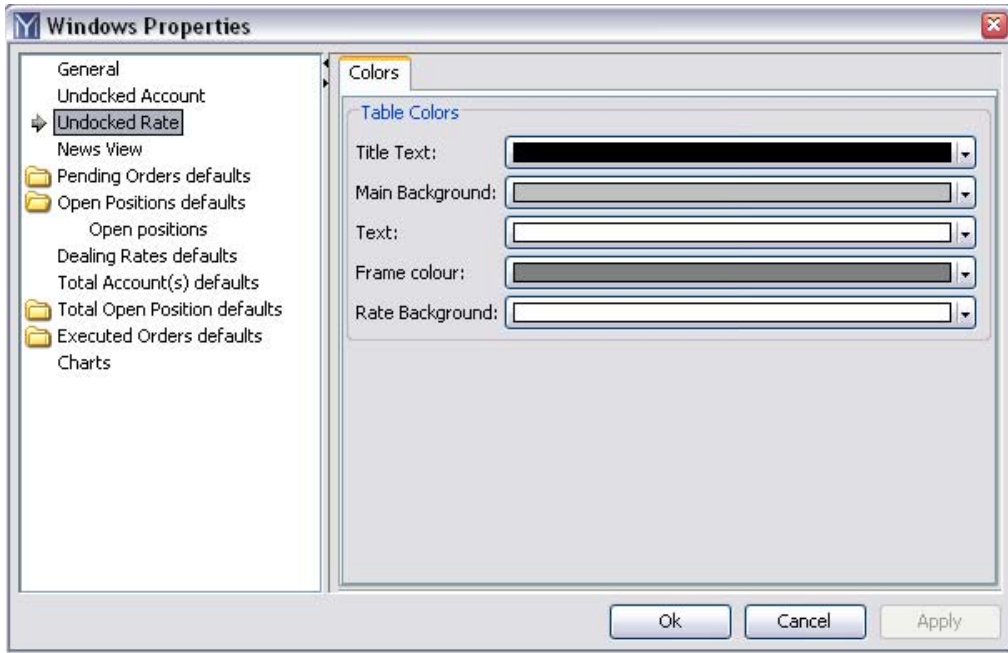
General: Enables tooltips and windows aggregation (window can be placed into another and both are accessible via tabs right above) and subtitles.



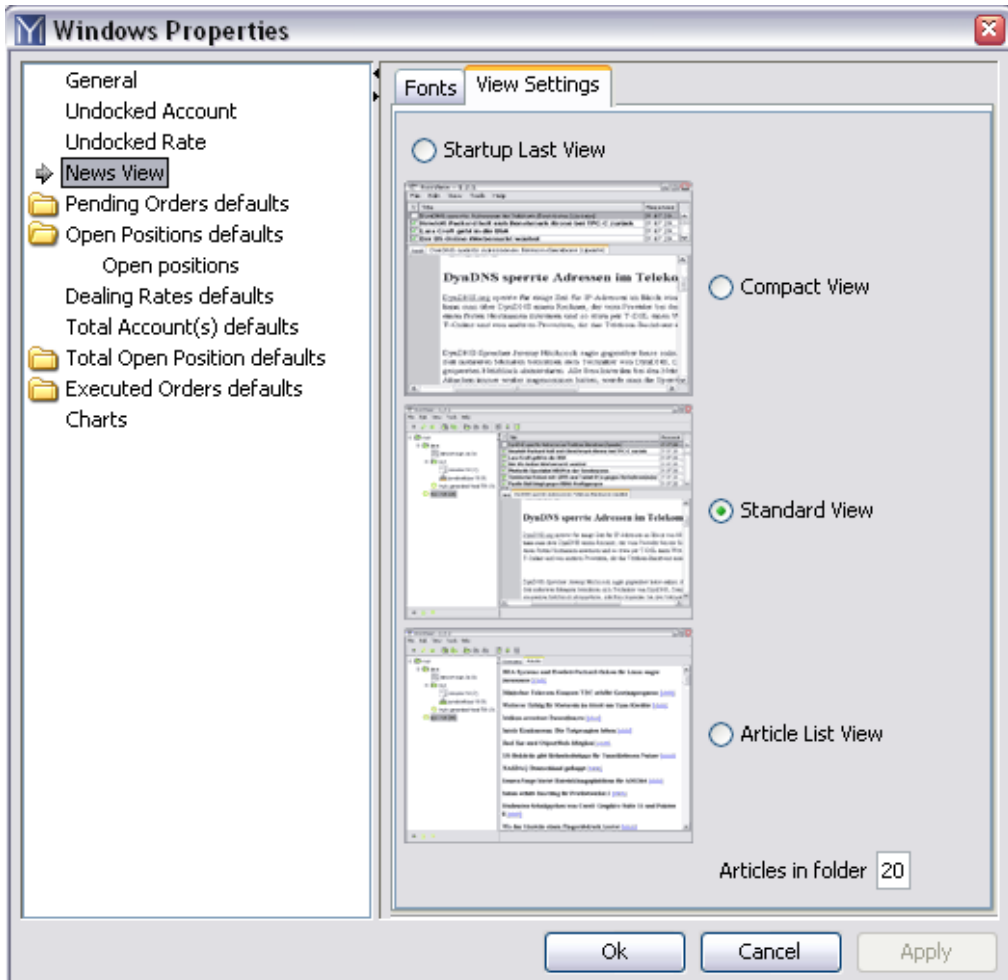
Undocked Account: allows changing Font size and colors.



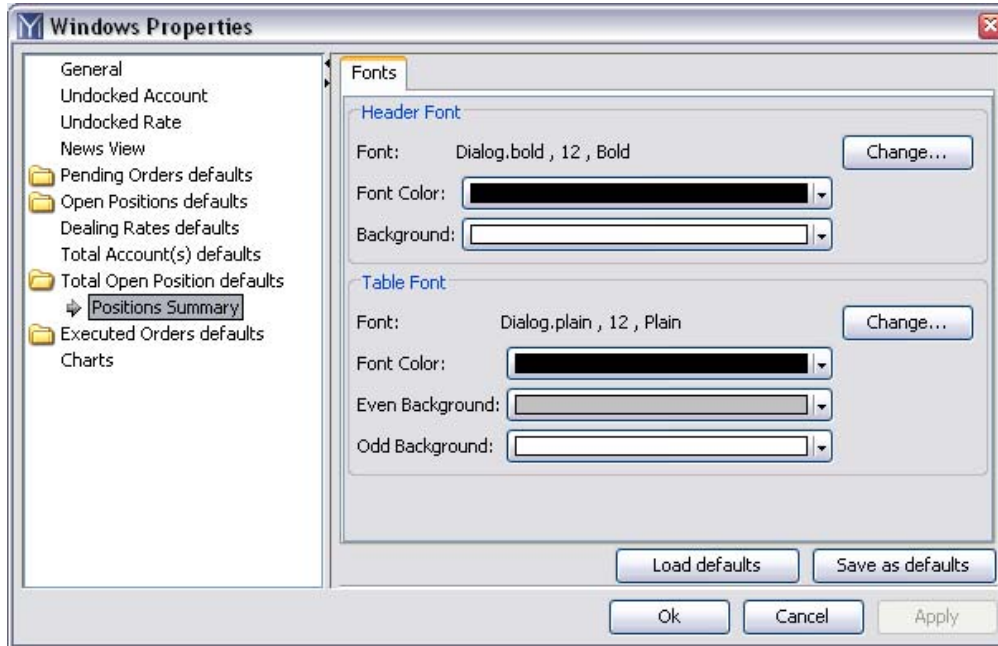
Undocked Rate: allows changing your preference of colors for an Undocked rates.



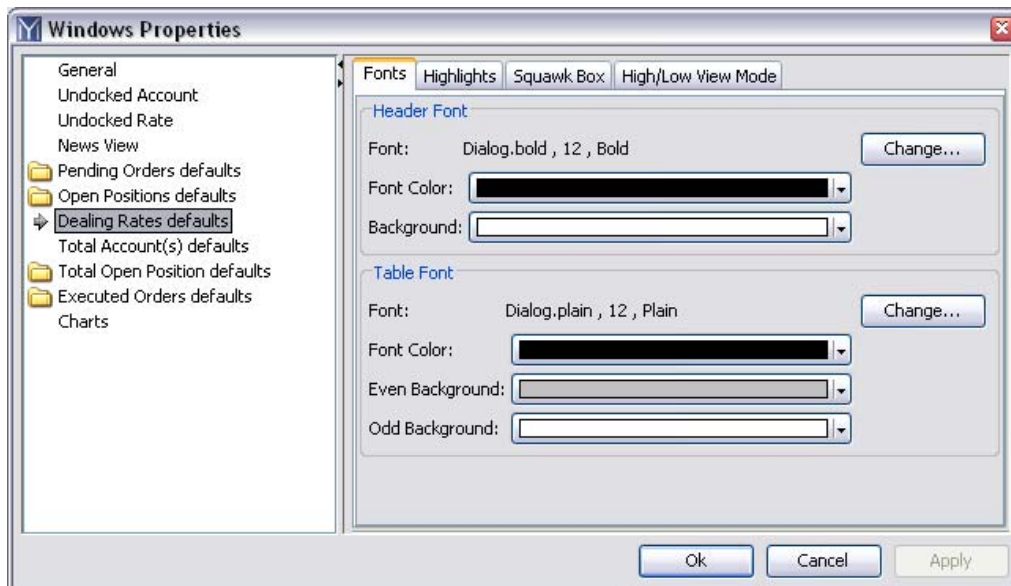
News View: allows choosing news fonts as well as your preferred view for the News window. Startup Last View loads the window the way it was viewed last.



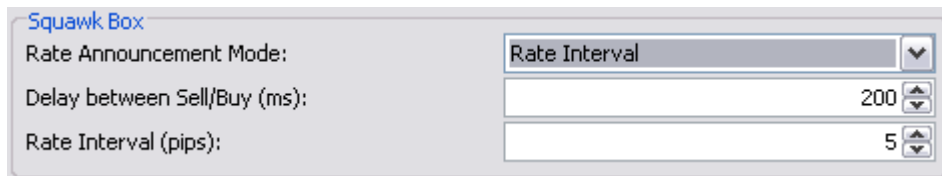
Pending Orders, Open Positions, Total Account(s) defaults, Positions Summary, Executed Orders: properties for these windows are very similar and typically allow you to change and save your choice of Fonts and Colors.



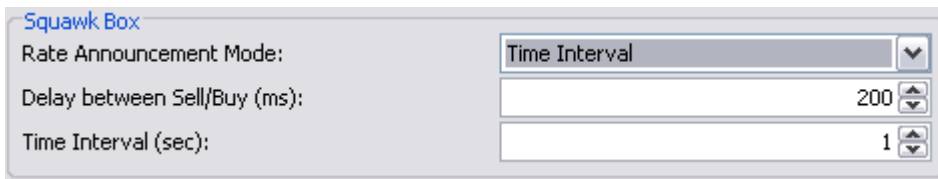
Dealing Rates defaults: highlights adjust size, coloring and its duration for incoming prices.



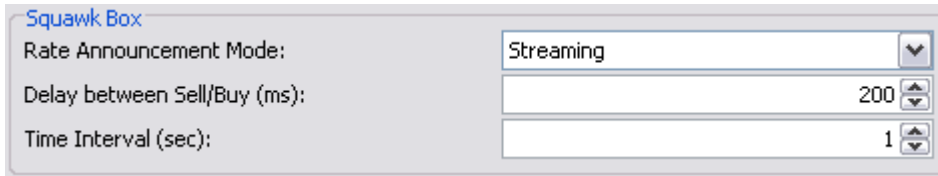
Squawk Box feature can be adjusted to announce rate changes triggered by the rate change in pips,



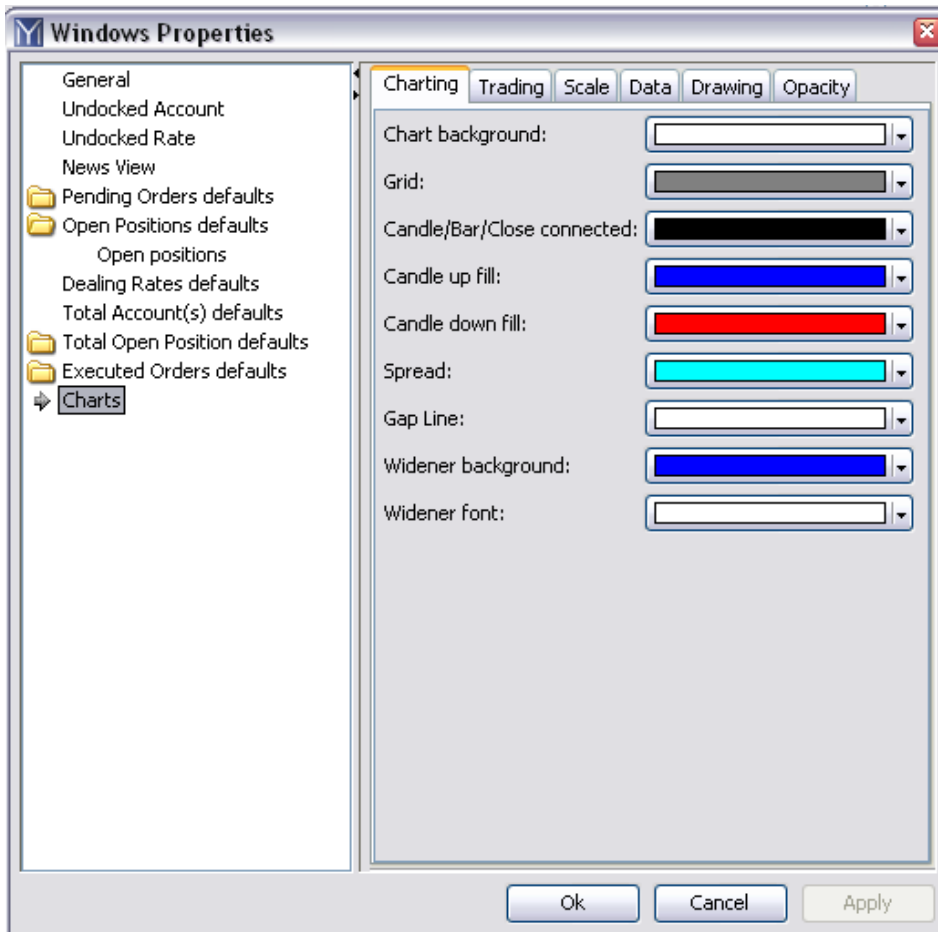
preset time interval in seconds,



or continuously.



Charts: Allows changing color preferences for Charts as well as Trading Orders (each type of the order can be differentiated by color), Scale, Data (font color of price quotes), Drawing (on charts) and Opacity (for Charts, Trend lines, Indicators, Entry Orders, S/L Orders, Trades, Spread, Mouse Info)



Using Right-Click function

Each application window has a submenu accessible by right-clicking. These features allow trader to place commands faster and navigate application with ease.

Dealing Rates window

<input checked="" type="checkbox"/>	<input type="checkbox"/>	Instrument	Bid	Ask	Time
<input checked="" type="checkbox"/>	<input type="checkbox"/>	EURUSD	1.5447	1.5456	7:20:08 PM
<input checked="" type="checkbox"/>	<input type="checkbox"/>	USDJPY			19:55 PM
<input checked="" type="checkbox"/>	<input type="checkbox"/>	GBPUSD			20:08 PM
<input checked="" type="checkbox"/>	<input type="checkbox"/>	USDCHF			20:08 PM
<input checked="" type="checkbox"/>	<input type="checkbox"/>	EURCHF			19:55 PM
<input checked="" type="checkbox"/>	<input type="checkbox"/>	AUDUSD			19:58 PM
<input checked="" type="checkbox"/>	<input type="checkbox"/>	USDCAD			20:08 PM
<input checked="" type="checkbox"/>	<input type="checkbox"/>	EURGBP			20:05 PM
<input checked="" type="checkbox"/>	<input type="checkbox"/>	EURJPY			20:05 PM
<input checked="" type="checkbox"/>	<input type="checkbox"/>	GBPJPY			20:08 PM
<input checked="" type="checkbox"/>	<input type="checkbox"/>	EURCAD			19:55 PM
<input checked="" type="checkbox"/>	<input type="checkbox"/>	EURAUD			20:08 PM
<input checked="" type="checkbox"/>	<input type="checkbox"/>	GBPCHF			20:08 PM
<input checked="" type="checkbox"/>	<input type="checkbox"/>	CHFJPY			20:08 PM
<input checked="" type="checkbox"/>	<input type="checkbox"/>	AUDCAD			20:08 PM
<input checked="" type="checkbox"/>	<input type="checkbox"/>	AUDJPY			20:05 PM
<input checked="" type="checkbox"/>	<input type="checkbox"/>	NZDUSD			20:08 PM
<input checked="" type="checkbox"/>	<input type="checkbox"/>	CADJPY			20:08 PM
<input checked="" type="checkbox"/>	<input type="checkbox"/>	DOW JONES I			15:29 AM
<input checked="" type="checkbox"/>	<input type="checkbox"/>	S&P 500			15:30 AM
<input checked="" type="checkbox"/>	<input type="checkbox"/>	NASDAQ 100			15:30 AM

Context menu items for EURUSD:

- Move Instrument Up
- Move Instrument Down
- Monitored Instruments
- Set Rate Alert
- Market Buy at 1.5455
- Market Sell at 1.5445
- Entry Stop Buy >= 1.5465
- Entry Limit Buy <= 1.5450
- Entry Stop Sell <= 1.5435
- Entry Limit Sell >= 1.5450
- Rates View Mode
- Undock Instrument
- Confirm Order
- Properties
- View Chart EURUSD
- Copy Data to Clipboard

Right-click on window's columns' headers allows you to select the following menu items: Visible Columns, Adjust Column Size, Default Sorting, and Properties.

<input checked="" type="checkbox"/>	<input type="checkbox"/>	Instrument	Bid	Ask	Time
<input checked="" type="checkbox"/>	<input type="checkbox"/>	EURUSD			
<input checked="" type="checkbox"/>	<input type="checkbox"/>	USDJPY			
<input checked="" type="checkbox"/>	<input type="checkbox"/>	GBPUSD			
<input checked="" type="checkbox"/>	<input type="checkbox"/>	USDCHF			
<input checked="" type="checkbox"/>	<input type="checkbox"/>	EURCHF	1.5501	1.5501	

Context menu items for Instrument header:

- Visible Columns
- Adjust Column Size
- Default Sorting
- Properties

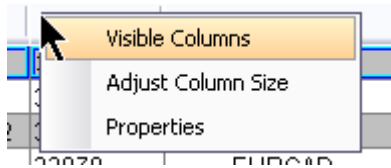
Right-click on window's main field will bring up the following pop-up menu:

- Move instrument Up: moves currency pair up.
- Move instrument Down: moves currency pair down.
- Monitored Instruments: opens up a window that lets you select currency pairs displayed in Dealing Rates window.
- Set Rate Alert: allows you to create and edit temporary and permanent alerts triggered by wide choice of events.
- Market Buy at: allows you to place market order (buy) by opening dialog box where you can specify order amount, price and acceptable range in pips. Check Hedge if it is a hedging order.
- Market Sell at: allows you to place market order (sell) by opening dialog box where you can specify order amount, price and acceptable range in pips. Check Hedge if it is a hedging order.

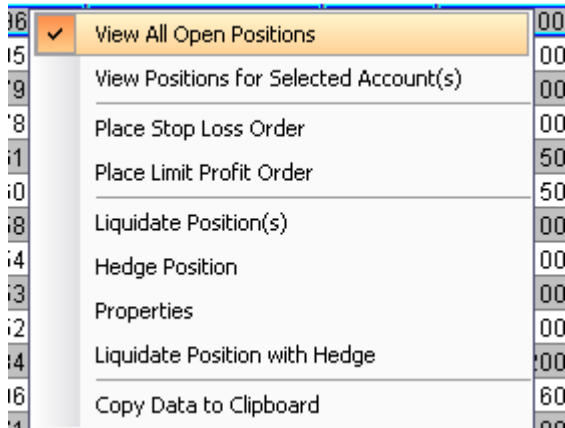
- Entry Stop Buy \geq : allows you to create pending order (Buy) at rate above market rate by opening dialog box where you can specify order amount, order durations, enter rate, and Hedge operation.
- Entry Limit Buy \leq : allows you to create pending order (Buy) at rate below market rate by opening dialog box where you can specify order amount, order durations, enter rate, and Hedge operation.
- Entry Stop Sell \leq : allows you to create pending order (Sell) at rate below market rate by opening dialog box where you can specify order amount, order durations, enter rate, and Hedge operation.
- Entry Limit Sell \geq : allows you to create pending order (Sell) at rate above market rate by opening dialog box where you can specify order amount, order durations, enter rate, and Hedge operation.
- Rates View Mode: allows you to choose the view mode: compact or extended.
- Undock Instrument: brings up a window with selected currency pair above all other windows for easy monitoring.
- Confirm order: allows you to enable or disable Order Confirmation. Note: after Order Confirmation is disabled, the orders are sent to the dealing desk immediately after you press the Submit button on the Place Order dialog box without confirmation.
- View Chart: allows you to select and view a chart window with selected timeframe.
- Properties: allows you to change default backgrounds, fonts, and fonts' color as well as restore default settings in all application windows.
- Copy Data to Clipboard: allows you to copy Dealing Rates window data to Clipboard for further use in other programs.
- Detach: allows you to detach the window from the main application window (window can be moved in and out main application window).

Open Positions window

Right-click on window's columns' headers allows you to select following menu items: Visible Columns, Adjust Column Size, and Properties.

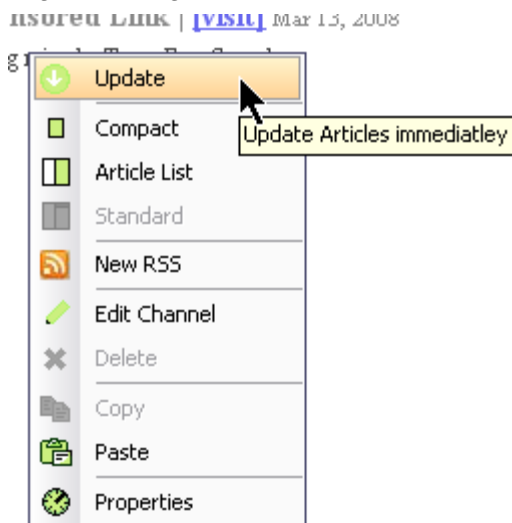


Right-click on any open position within the window will bring up the following submenu. Pictures below show easy to use commands for this window.



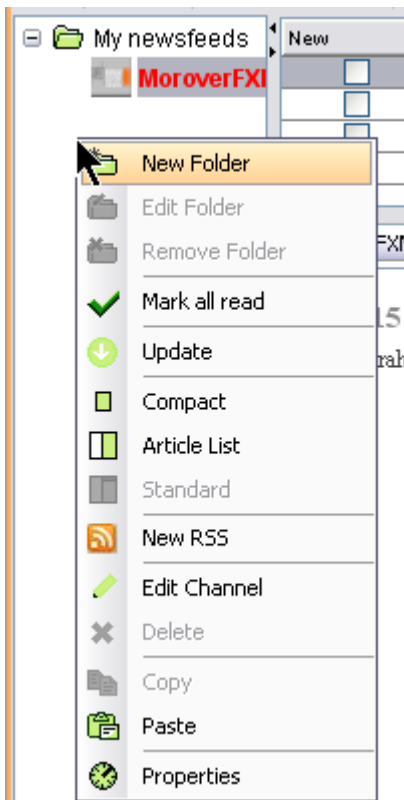
News window

Right-clicking on the news field will result in the following submenu:



As you may noticed many commands are duplicate to those located in the button bar at the top of News window.

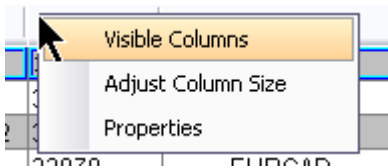
The right-click on the left part of News window will bring up the following submenu:



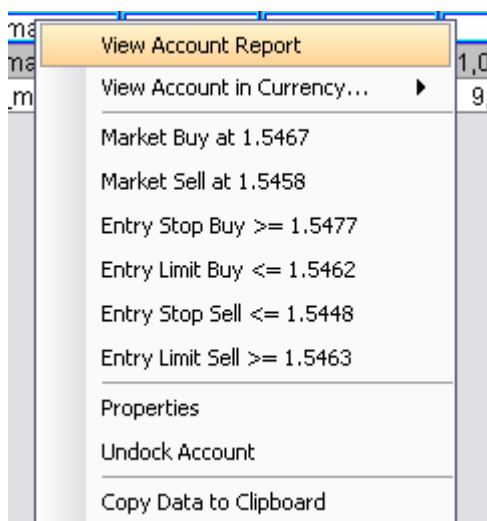
This submenu will let you easily manage your newsfeeds, edit channels and Properties as well as many other options.

Total Account(s) Equity window

Right-clicking on window's columns lets you select Visible Columns, Adjust Column Size and its properties.



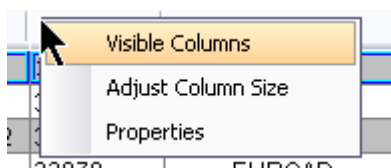
Right-click on any listed account within Total Account(s) Equity window will result in the following list of submenus:



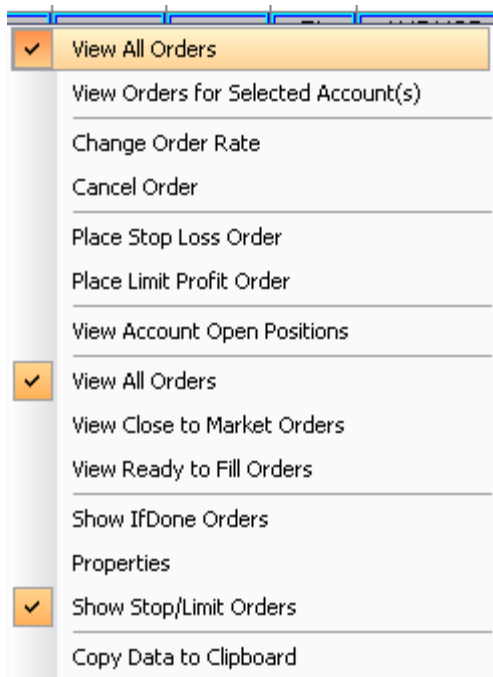
- **View Account Report:** opens a browser window and connects to report portal letting you generate Client report by a preset or customized date, view and save it in HTML, PDF, or Excel.
- **View Account in Currency:** allows you to select any available currency to convert account's financials into.
- **Market Buy at:** allows you to place market order (buy) by opening dialog box where you can specify order amount, price and acceptable range in pips. Check Hedge if it is a hedging order.
- **Market Sell at:** allows you to place market order (sell) by opening dialog box where you can specify order amount, price and acceptable range in pips. Check Hedge if it is a hedging order.
- **Entry Stop Buy >=:** allows you to create pending order (Buy) at rate above market rate by opening dialog box where you can specify order amount, order durations, enter rate, and Hedge operation.
- **Entry Limit Buy <=:** allows you to create pending order (Buy) at rate below market rate by opening dialog box where you can specify order amount, order durations, enter rate, and Hedge operation.
- **Entry Stop Sell <=:** allows you to create pending order (Sell) at rate below market rate by opening dialog box where you can specify order amount, order durations, enter rate, and Hedge operation.
- **Entry Limit Sell >=:** allows you to create pending order (Sell) at rate above market rate by opening dialog box where you can specify order amount, order durations, enter rate, and Hedge operation.
- **Undock Account:** brings up a window with selected account above all other windows for easy monitoring.
- **Properties:** allows you to change default backgrounds, fonts, and fonts' color as well as restore default settings in all application windows.
- **Copy Data to Clipboard:** allows you to copy Dealing Rates window data to Clipboard for further use in other programs.

Pending Orders window

Right-clicking on window's columns lets you select Visible Columns, Adjust Column Size and its properties.



Right-click on any listed orders in this window will result in the following list of easy to use submenus:



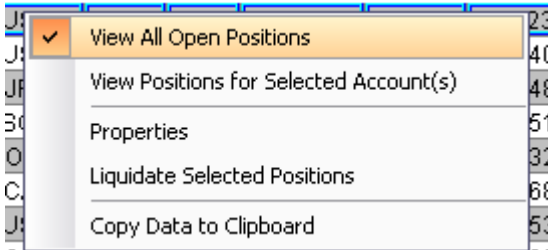
- View All Orders: allows trader to see all pending orders for all available accounts.
- View Orders for Selected Account(s): allows you to see all pending orders for the selected account(s).
- Change Order Rate: allows editing position liquidation when appropriate rate is reached or when PL reaches a certain set value.
- Cancel Order: cancels an order. A popup window will confirm pending order cancellation.
- Place Stop Loss Order: allows setting or removing a stop loss rate or a PL value by reaching which position must be liquidated.
- Place Limit Profit Order: allows setting or removing a limit profit rate or a PL value by reaching which position must be liquidated.
- View Account Open Positions: allows you to see all currently open positions by instrument.
- View All Orders: will show all orders for all accounts or only for selected account(s) if View Orders for Selected Account(s) is selected.
- View Close to Market Orders: will show close to market price orders for all accounts or only for selected account(s) if View Orders for Selected Account(s) is selected.
- View Ready to Fill Orders: will show ready to fill orders for all accounts or only for selected account(s) if View Orders for Selected Account(s) is selected.
- Show if Done Orders: allows trader to see pending entry orders and their Stop and Limit entry orders.

- Show Stop/Limit Orders: shows only pending Stop and Limit orders for all accounts or only for selected account(s) if View Orders for Selected Account(s) is selected.
- Properties: allows you to change default backgrounds, fonts, and fonts' color as well as restore default settings in all application windows.
- Copy Data to Clipboard: allows you to copy Dealing Rates window data to Clipboard for further use in other programs.

Total Open Position by Instrument window

Right-click on window's columns' headers allows you to select following menu items: Visible Columns, Adjust Column Size, and Properties.

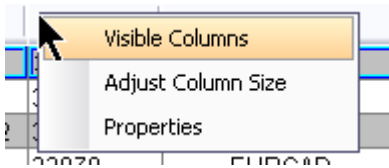
Right-click on window's main field will bring up the following pop-up menu:



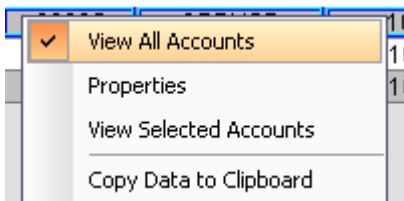
- View All Open Positions: allows you to see all currently open positions by instrument.
- View Positions for Selected Account(s): allows you to see all currently open positions by instrument for the selected account(s).
- Liquidate Selected Positions: allows closing selected positions for particular instrument.
- Properties: allows you to change default backgrounds, fonts, and fonts' color as well as restore default settings in all application windows.
- Copy Data to Clipboard: allows you to copy Dealing Rates window data to Clipboard for further use in other programs.

Executed Orders window

Right-clicking on window's columns lets you select Visible Columns, Adjust Column Size and its properties.

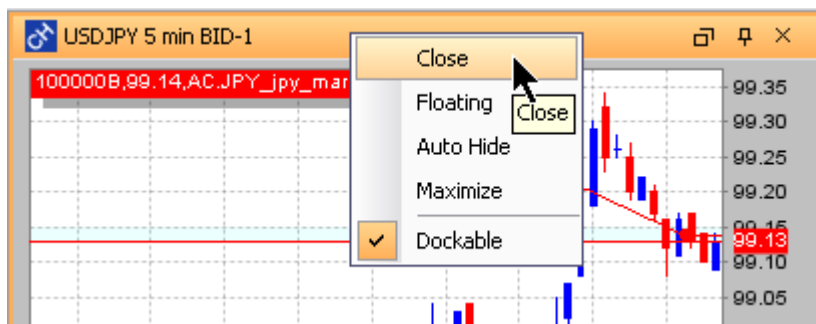


Right-click on any listed orders within the window will result in the following list of easy to use submenus:

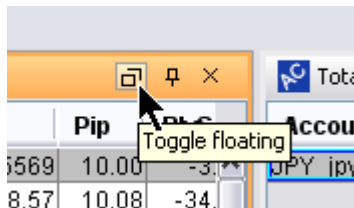


- View All Accounts: shows executed orders on all accounts.
- View Selected Accounts: shows executed orders on selected accounts.
- Properties: allows you to change default backgrounds, fonts, and fonts' color as well as restore default settings in all application windows.
- Copy Data to Clipboard: allows you to copy Dealing Rates window data to Clipboard for further use in other programs.

Toggling windows



- Close: Closes the window.
- Floating: Lifts the window out of its original place and allows it to be easily moved to another location within the application or outside. Floating function can also be accessed in upper right corner of each window.
Note: By default the window is Dockable. It will try to place (dock) itself within the application even after making the window floating. Uncheck Dockable to freely move the window within the application.



- Auto Hide: Minimizes the window to the closest side of the application. Clicking on minimized tab will open up the (hidden) window. Auto Hide function can also be accessed in upper right corner of each window.

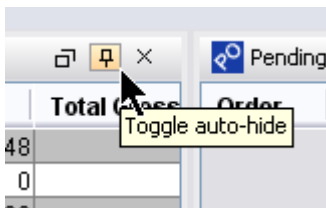
DEV - Trading Desk

File Tools Window Charts Help

USDJPY 5 min BID-1 Dealing Rates Accounts

Dealing Rates

	<input type="checkbox"/>	Instrument	Bid	Ask	Time	High	Low	Pip	RvS
Messages	<input checked="" type="checkbox"/>	EURUSD	1.5576	1.5578	12:09:55 PM	1.5673	1.5569	10.00	-3.86
	<input checked="" type="checkbox"/>	USDJPY	99.15	99.17	12:09:14 PM	99.70	98.57	10.08	-34.00
	<input checked="" type="checkbox"/>	GBPUSD	1.9778	1.9783	12:09:49 PM	1.9892	1.9775	10.00	-6.98
	<input checked="" type="checkbox"/>	USDCHF	1.0017	1.0020	12:09:55 PM	1.0025	0.9950	9.98	10.69
	<input checked="" type="checkbox"/>	EURCHF	1.5606	1.5609	12:09:30 PM	1.5639	1.5576	9.98	-6.00
	<input checked="" type="checkbox"/>	AUDUSD	0.9124	0.9129	12:09:49 PM	0.9195	0.9094	10.00	-6.00



- Maximize: Maximizes the window so it becomes a single largest opened window in the application
- Dockable: Window tries to place itself within the application and 'offers' a few possible configurations while moving a new or floating window within the application.
Note: By default all application windows are dockable.

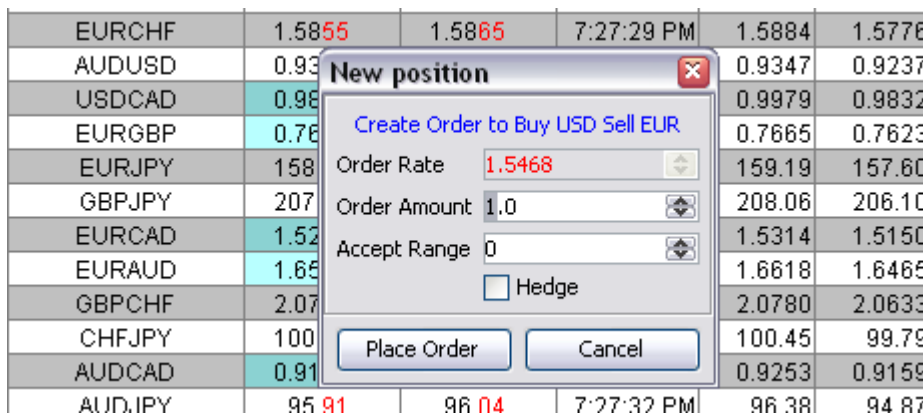
Trading Operations

Trading on Clearing Account

There are several possible ways for placing a market order:

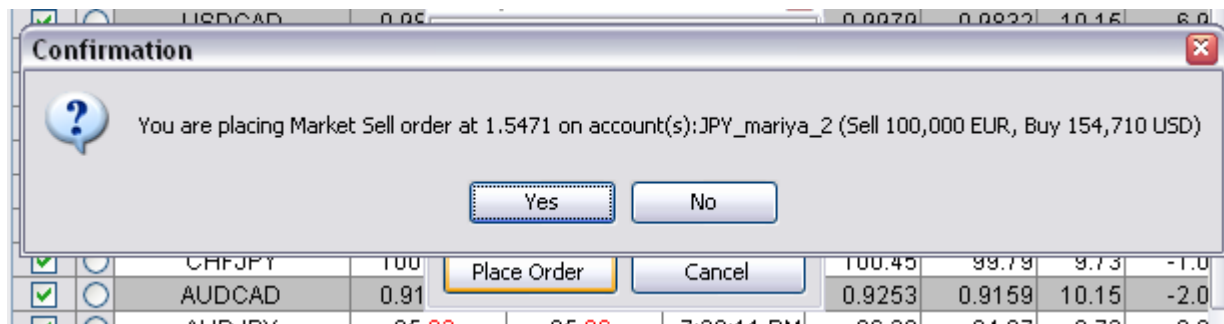
From Dealing Rates Window:

- Select an account in the Account Information window.
- Click on a currency pair Bid or Ask price in the [Dealing Rates](#) window.
- Alternatively, right-click on the currency pair row, choose the Market Buy or Sell at the rate displayed. The New Position pop up window will appear:



You can choose the number of lots, Range and Hedge if needed.

- Press Place Order button. A confirmation window will open:



Once open, new position will be shown in the Open Positions window, and you will receive the Audio Alert “Market Order, Position Opened”. The account information will be updated. (In certain circumstances, as a result of placing an order, opposite direction position could be closed).

From Charts window:

Another way of placing a market order is to right-click on the appropriate chart window and choose the Market Buy or Sell at the rate displayed. The New Position pop up window will appear. Follow the above instructions.

Trading on behalf of the trader

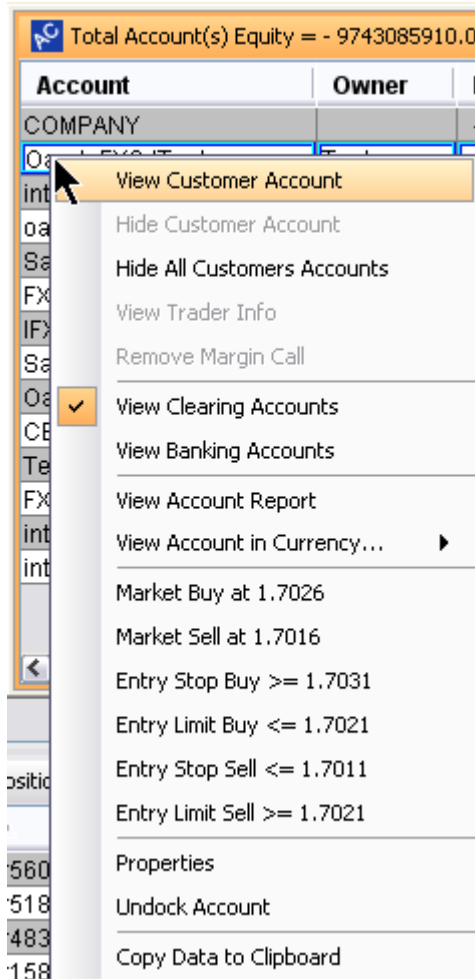
Trading on behalf of the trader happens when a trader calls a Dealing desk and asks to perform operations with his or her account(s).

When trader calls, dealer must ask for his/her login name or account number, bring account up, use dialog box View Trader Info, then ask for phone password and account information before proceeding.

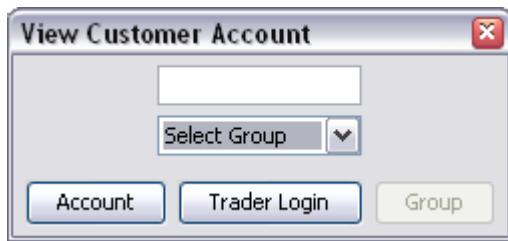
Trader Login - opens all trader's accounts.

Account – will open only one account entered.

Dealer can access this information by right-clicking anywhere in Total Account(s) Equity window and selecting View Customer Account submenu.



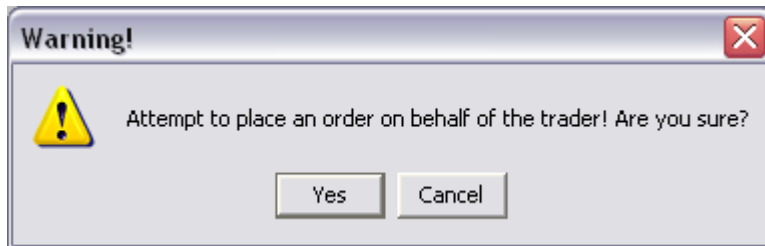
Enter client's account or trader login into the field or select a group from drop-down menu and press appropriate button.



The account will appear in Total Account(s) Equity window. Right-click and select View Trader Info to view a pop up dialog box with trader's Login and Phone Password to confirm his or her identity.

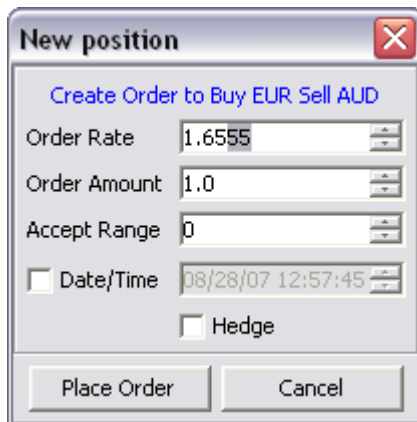
After this step a client can ask dealer to perform operations with the account.

Opening a new position on client's behalf will pop up the dialog box confirming the trade on client's behalf:



Clicking Yes will pop up a New position window allowing you to enter the amount, the rate for position, acceptable range, custom Date/Time, if needed, and Hedge option.

By default this window looks like this:



Check Date/Time to record when this position was taken. Check Hedge if client wants to hedge the position.

Platform will also record additional date and time showing when the entry was actually entered in the application.

Accept Range: Range of pips the trader will accept to catch up with moving market.